

# EMPISAL

SUMMER KNITWEAR

BOOK AUP5



# contents

Page 1.	Lady's Hooded Jacket	AUP5 - 1
Page 4.	Lady's Twin Set (Top Only)	AUP5 - 2
Page 5.	Lady's Twin Set (Cardigan)	AUP5 - 3
Page 8.	Lady's Top	AUP5 - 4
Page 9.	Lady's Top	AUP5 - 5
Page 12.	Lady's Top	AUP5 - 6
Page 13.	Lady's Cover-up	AUP5 - 7
Page 17.	Lady's Top	AUP5 - 8
Page 19.	Lady's Stole	AUP5 - 9
Page 19.	Shawl	AUP5 - 10
Page 20.	Lady's Bikini	AUP5 - 11
Page 21.	Lady's Swimsuit	AUP5 - 12



# EMPISAL

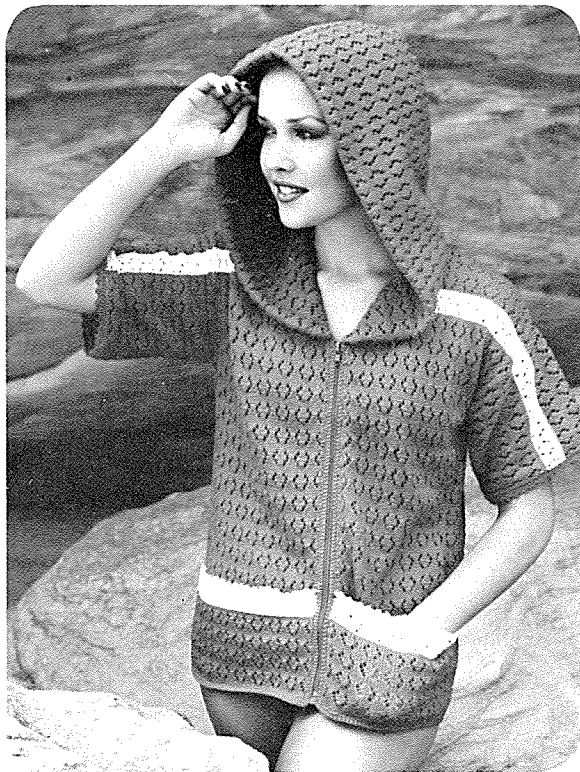
## INTERNATIONAL KNITWEAR COLLECTION

*Empisal are pleased to present their International Fashion Co-ordinator's selection of the following PATONS machine knitted garments for LADIES (Summer and beach wear).*

\*AN EMPISAL PUBLICATION: WORLD COPYRIGHT BY EMPISAL INTERNATIONAL

### LADY'S HOODED JACKET

AUP5 - 1



#### MATERIALS: PATONS GEM

	A	B	C	D
M.C. 50 g balls	11	11	12	12
or 200 g balls	3	3	3	3
C.C. 50 g balls	1	1	1	1

45 cm (18 ins.) open end zip. 3.50 (No 10-11)  
Crochet Hook.

#### MEASUREMENTS:

Fits Bust	cm	75	80	85	90
	ins.	29½	31½	33½	35½
Measures	cm	85	90	95	100
	ins.	33½	35½	37½	39¼
Length	cm	58	58	58	58
	ins.	22¾	22¾	22¾	22¾
Sleeve seam	cm	18	All sizes		
	ins.	7			

**PATTERN:** Card No 416 – No. 16. Vol. 6.

**TENSION:** T 5.2 = 28 sts and 45 rows to 10 cm  
(approx 4 ins) over patt. PLEASE CHECK.

**BACK:** Carr on R using M.C.T 5.2, cast on 122 (130-138-146) sts for selvedge edge. R/C 0. Knit 5 rows. **START PUNCH CARD.** Work in patt until R/C reads 51. Using C.C. work in patt until R/C reads 63. Using M.C. Work in patt until R/C reads 231. Using C.C. Work in patt until R/C reads 243. Using M.C. work in patt until R/C reads 267. **SHAPE SHOULDERS.** Cast off 11 (12-13-14) sts at beg of next 8 rows — 34 sts. R/C 0. Work 4 rows. Inc at ea end of next and foll 4th rows 8 times in all — 50 sts. Work until R/C reads 72. Dec at ea end of next and foll 4th rows 9 times in all, then in foll alt rows 3 times. Work 1 row. R/C reads 112. Cast off rem 26 sts.

**RIGHT FRONT:** Using M.C.T. 5.2 Carr on R cast on 62 (66-70-74) sts. 61(65-69-73) sts. to R. of 0, 1 st. to L. of 0. Work as for Back until R/C reads 213. **SHAPE NECK:** Dec at L of machine in next and foll 3rd rows 6 times in all. Work 2 rows. Using C.C. dec in next and foll 3rd rows 4 times in all. Work 2 rows. Using M.C. dec in next and foll 3rd rows 8 times in all. Work 1 row. **SHAPE SHOULDER:** Cast off 11 (12-13-14) sts at beg of next and alt rows until all sts are cast off.

**LEFT FRONT:** Using M.C.T. 5.2 carr on R cast on 62 (66-70-74) sts for selvedge edge. 61 (65-69-73) sts to L of 0, 1 st to R. of 0. Work to correspond with R Front.

**SLEEVES:** Using M.C.T 5.2 Carr on R cast on 50 sts for selvedge edge. R/C 0. Knit 7 rows. **START PUNCH CARD.** Work in patt until R/C reads 53. Using C.C. work in patt until R/C reads 65. Using

M.C. work in patt until R/C reads 111. Using C.C. work in patt until R/C reads 123. Using M.C. work in patt until R/C reads 175. Knit 2 rows. Cast off.

**POCKETS (2):** Work as for L and R Front until R/C reads 63. Cast off.

**RIGHT FRONT PANEL OF HOOD:** Carr on R using M.C.T 5.2 cast on 100 sts for selvedge edge. R/C 0. Knit 3 rows, inc at L of machine in 2nd row. **START PUNCH CARD:** Work in patt inc at L of machine in next and foll alt rows 40 times in all — 141 sts. Work 5 rows. Dec at L of machine in next and foll alt rows 41 times in all. 100 sts. Work 1 row. R/C reads 169. Cast off.

**LEFT FRONT PANEL OF HOOD:** Work to correspond with Right Front Panel reversing all shapings.

**TO MAKE UP:** Press lightly. Join straight side edges of front panels of hood, fold hood in half and attach shaped edges to neck of jacket and cast on and cast off edges to back panel of hood. Sew in sleeves.

**SLEEVE AND POCKET TOP EDGING:** Work 1 row d c divisible by 3 along lower edge of sleeves and upper edge of pockets. 2nd row — 1 ch., 1 d.c. in each d.c. to end. 3rd row — 1 ch.,\* 1 d.c. in each of next 3 d.c., 3 ch., 1 d.c. in first of these ch., rep. from \* to end. Fasten off. Join side and sleeve seams, sewing pocket in with side seam. Work 2 rows d c evenly around front and lower edges of jacket. Sew in zip. Press seams.





Pattern AUP5-2



Pattern AUP5-3



# LADY'S TWIN SET (TOP ONLY)

AUP5 -2



## MATERIALS:

PATONS AZALEA

	A	B	C	D
<b>TOP:</b>				
M.C. 25 g balls	3	3	4	4
C.C.1 25 g balls	1	1	1	1
C.C.2 25 g balls	1	1	1	1
<b>CARDIGAN:</b>				
M.C. 25 g balls	6	6	7	7
C.C.1 25 g balls	1	1	1	1
C.C.2 25 g balls	1	1	1	1

## MEASUREMENTS:

### TOP:

Fit Bust	cm	75	80	85	90
	ins.	29½	31½	33½	35½
Measures	cm	65	70	75	80
	ins.	25½	27½	29½	31½
Length	cm	39	40	40	41
	ins.	15½	15¾	15¾	16

### CARDIGAN:

Fits Bust	cm	75	80	85	90
	ins.	29½	31½	33½	35½
Measures (slightly stretched)	cm	80	85	90	95
	ins.	31½	33½	35½	37½
Length	cm	44	45	45	46
	ins.	17¾	17¾	17¾	18
Sleeve seam	cm	10	10	10	10
	ins.	4	4	4	4

**PATTERN:** Card No 20A FAIR ISLE.

**TENSION:** T 5 = 31½ sts and 51 rows to 10 cm (approx 4 ins) over st st. T 4 = 33½ sts and 47½ rows to 10 cm (approx 4 ins) over Fair Isle and 52 sts and 42 rows to 10 cm (approx 4 ins) over rib (slightly stretched).

### (BACK AND FRONT ALIKE)

**TOP:** T.0 Cast on 93 (101-109-117) sts for 1x1 rib. T.3 Rib 20 rows. T.4 Rib 38 (40-42-44) rows. Transfer sts to Main Bed. T.5 Knit 6 rows. Transfer 2nd and alt sts on to adj needles. Leave empty needles in B pos. Knit 8 rows. Place butts of sts from first row of st st on to needles and close hem. Knit 5 rows. Set Punch Card. R/C 0 T.6 Work 48 rows patt. Stop Card. T 5 Knit 10 rows. Make a row of holes as before. T 4 Knit 6 rows. Cast off.

**STRAPS:** (2) T.0. Cast on 19 sts for 1 x 1 rib, inc at ea end of Main Bed after selvedge. T.2. rib 86 (90-94-102) rows. Cast off.

**TO MAKE UP:** Press lightly. Join side seams. Fold in hem along upper edge and stitch down. Sew on straps. Press seams.

## LADY'S TWIN SET (CARDIGAN)

AUP5 - 3



### CARDIGAN:

**BACK:** T.0 Cast on 125 (133-141-149) sts for 1 x 1 rib. T 4. Rib 121 rows. **SHAPE ARMHOLES:** R/C.0. Cast off 3 (3-6-6) sts at beg of next 2 rows. Dec at ea end of every row 13 (15-15-17) times 93 (97-99-103) sts. Work 1 row. Transfer sts to Main Bed. T 5 Knit until R/C reads 84 (88-88-92). **SHAPE SHOULDERS.** Cast off 8 (8-9-9) sts at beg of next 4 rows, then 8 (9-8-9) sts at beg of foll 2 rows. Cast off rem 45 (47-47-49) sts.

**RIGHT FRONT:** T.0 Cast on 65 (69-73-77) sts for 1 x 1 rib 29 (31-35-37) sts to R of 0, 36 (38-38-40) sts to L of 0. T.4 R/C 0. Rib until R/C reads 121. **SHAPE ARMHOLE:** R/C 0. Cast off 3 (3-6-6) sts at beg of next row. Work 1 row. Dec at armhole edge in every row 13 (15-15-17) times — 49 (51-52-54) sts. Transfer sts to Main Bed. T5 Knit 1 row. Set Punch Card. Work single motif on centre 24 needles, pushing other selected needles into "B" pos. Work until R/C reads 27 (29-29-31). **SHAPE NECK.** Cast off 8 sts at beg of next row. Dec at neck edge in next and foll alt rows 12 (13-13-14) times in all, then in foll 4th rows 3 (2-2-2) times — 26 (28-29-30) sts. **STOP CARD.** Cont dec at neck edge in 4th rows from prev dec 2 (3-3-3) times — 24 (25-26-27) sts. Knit until R/C reads 84 (88-88-92). **SHAPE SHOULDER.** Cast off 8 (8-9-9) sts at beg of next and foll alt row. Work 1 row. Cast off rem 8 (9-8-9) sts.

**LEFT FRONT:** Work to correspond with R. Front, omitting motif and reversing all shapings.

**SLEEVES:** T.0 Cast on 95 (99-105-111) sts for 1 x 1 rib. T.4 Rib 42 rows. **SHAPE TOP:** R/C 0. Cast off 2 sts at beg of next 2 rows. Dec at end of next and every alt row 18 (19-20-21) times in all, then in every row 15 times. R/C reads 52 (54-56-58). Cast off rem 25 (27-31-35) sts.

**NECKBAND:** Join shoulder seams. Wrong side facing, pick up 141 (147-147-153) sts evenly around neck. T.4 Knit 8 rows. Make a row of holes as for Top. T.3 Knit 8 rows. Cast off.

**RIGHT FRONT BAND:** Wrong side facing pick up 119 sts evenly along front edge, leaving last 8 rows of neckband free. Counting from R of machine, drop sts off 4th and 5th and every foll. 17th and 18th needles 7 times in all, making a 2 st. buttonhole. (Page 55 inst manual). T.4 Knit 8 rows. Make a row of holes. T.3 Knit 8 rows. Cast off.

**LEFT FRONT BAND:** Work as for Right Front Band, omitting buttonholes.

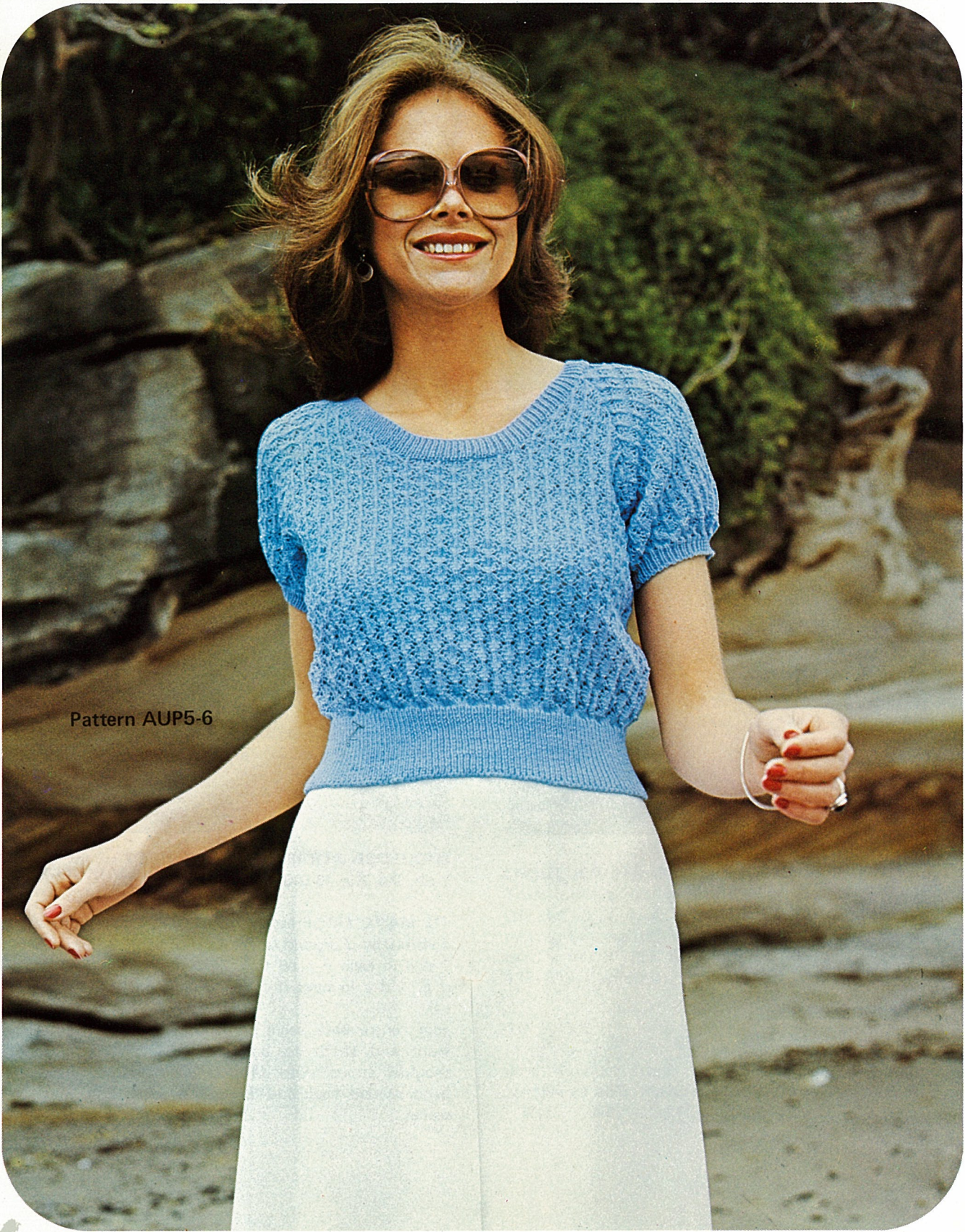
**TO MAKE UP:** Press lightly. Join side and sleeve seams. Fold neckband and Front bands in half and stitch in pos, leaving buttonholes free. Sew on buttons. Press seams.





Patterns AUP5-4 and AUP5-5





Pattern AUP5-6



# LADY'S TOP

AUP5 - 4



## MATERIALS:

PATONS TOUCH OF ICE

	A	B	C	D
50 g balls	3	3	3	3

## MEASUREMENTS:

Fits Bust	cm	75	80	85	90
	ins.	29½	31½	33½	35½
Measures	cm	65	70	75	80
	ins.	25½	27½	29½	31½

Length	cm	39	40	40	41
	ins.	15¼	15¾	15¾	16

**PATTERN:** Card No. 413. LACE. No. 19. Vol. 6.

**TENSION:** T.7 = 23½ sts. and 43½ rows to 10 cm (approx 4 ins) over patt. PLEASE CHECK.

## TOP

**BAND T.0:** Cast on 155 (167-179-191) sts for 1 x 1 rib. T 4 R/C 0 Rib 40 rows. R/C 0. Cast off 37 (40-43-46) sts at beg of next 2 rows. Cast off 3 sts at beg of next 6 (12-18-24) rows. Dec at ea end of every row — 30 (24-18-12) times. 3 sts. R/C reads 38. Work 3 tog. Fasten off.

**BODY:** Cast on 75 (81-87-93) sts for selvedge edge. T 8 Knit 3 rows. R/C 0. Set Punch Card. T 7. Work in patt, casting on 3 sts at beg of foll 6 (12-18-24) rows, then 2 sts at beg of next 30 (24-18-12) rows — 153 (165-177-189) sts. Dec at ea end of next and foll alt rows 12 (13-14-15) times in all.

**SHAPE NECK:** Knit 102 (110-118-126) sts. at opp end to carr manually on to waste yarn. Push needles into A pos. NOTE CARD ROW NO. Work 1 row. Dec at ea end of next and foll alt rows 11 (12-13-14) times in all — 5 sts. Work 1 row. R/C reads 84 (88-92-96). Cast off. Bring rem needles back into B pos. Join yarn to rem sts. Cast off centre 75 (81-87-93) sts and work other side to correspond.

**SHOULDER STRAPS (2):** T.0 Cast on 7 sts for 1 x 1 rib. T.4. Rib 76 (80-80-84) rows. Cast off.

**TO MAKE UP:** Press lightly. Work 1 row of d c divisible by 2 around upper edge of band. 2nd row — 1 d c in each d c to end. 3rd row — \*3 ch, miss 1 d c, 1 d c in next d c, rep from \* to end. Fasten off.

Join centre back seam of band. Join top at centre front and stitch to band under edging. Sew on shoulder straps. Work crochet edging as for upper band around neck and armhole edges of top. Press seams.



# LADY'S TOP

AUP5 - 5



Measures	cm	60	65	70	75
	ins.	23½	25½	27½	29½
Length	cm	39	40	40	41
	ins.	15¼	15¾	15¾	16¼

**PATTERN:** Card No. 22 A – LACE.

**TENSION:** T 7 = 26½ sts and 42 rows to 10 cm (approx 4 ins) over patt. PLEASE CHECK.

**BACK:** T 7 – Carr on R, cast on 74 (74-86-86) sts for selvedge edge. 37 sts to L of 0, 37 (37-49-49) sts to R of 0. \*\* Knit 7 rows. Set Punch Card. R/C 0. T 7. Work in patt until R/C reads 104.\*\* Stop Card. Knit 6 rows. Cast off.

**FRONT:** T 7 Cast on 86 (98-98-110) sts for selvedge edge. 37 (49-49-49) sts to L of 0, 49 (49-49-61) sts to R of 0. Work as for Back from \*\* to \*\*. **SHAPE ARMHOLES:** R/C 0. Cast off 5 (7-7-7) sts at beg of next 2 rows. Dec at ea end of next and foll alt rows 7 (11-11-11) times in all – 62 (62-62-74) sts. Work 1 row. R/C reads 16 (24-24-24). Stop Card. T.6. Knit 6 rows, dec at ea end of next and foll alt rows 3 times in all. Cast off.

**ARMHOLE FACINGS:** (2) Wrong side facing pick up 21 (29-29-29) sts evenly along armhole edge (omitting 6 rows st st). T 7 Knit 6 rows, dec at upper edge of facing in 1st and foll alt rows 3 times in all. Cast off.

**SHOULDER STRAPS:** (2) T 0. Cast on 9 sts for 1 x 1 rib. Inc in ea end of Main Bed after selvedge – 11 sts. R/C 0. T 4 rib 4 rows. Make a buttonhole by moving 5th and 6th sts to adj needles. Leave empty needles in "B" pos. Work until R/C reads 108 (114-120-126). Cast off.

**TO MAKE UP:** Press lightly. Join side seams. Turn in facings and stitch in pos. joining mitred corners. Join shoulder straps to front of garments. Sew buttons on back. Press seams.

**MATERIALS:**  
PATONS TOUCH OF ICE

	A	B	C	D
50 g balls	3	3	3	4

2 Small Buttons.

**MEASUREMENTS:**

Fits Bust	cm	75	80	85	90
	ins.	29½	31½	33½	35½





Pattern AUP5-7



Pattern AUP5-8





# LADY'S TOP

AUP5 - 6



## MATERIALS:

PATONS AZALEA

	A	B	C	D
25 g balls	7	7	8	8

## MEASUREMENTS:

Fits Bust	cm	75	80	85	90
	ins.	29½	31½	33½	35½
Measures	cm	75	80	85	90
	ins.	29½	31½	33½	35½
Length	cm	46	47	47	48
	ins.	18	18½	18½	19
Sleeve seam	cm	8	8	8	8
	ins.	3¼	3¼	3¼	3¼

PATTERN: Card No. 411 No. 7 Vol. 6. LACE.

**TENSION:** T.4 = 32 sts and 55 rows to 10 cm (approx 4 ins) over patt. PLEASE CHECK.

**BACK:** T.0 Cast on 121 (129-137-145) sts for 1 x 1 rib. T.2 Rib 34 rows. Transfer sts to Main Bed. T.4 Knit 3 rows. Set Punch Card. R/C 0. T.4. Work in patt until R/C reads 108. **SHAPE ARMHOLES.** R/C 0. Cast off 3 sts at beg of next 2 rows. \*\* Dec at ea end of next and foll 4th (3rd-alt-alt) rows 7 (31-10-13) times in all - 101 (61-111-113) sts., A, C and D only - then in foll 3rd rows 20 (24-24) times - ALL SIZES - Work 1 row. R/C reads 88 (94-94-100). 61 (61-63-65) sts. Transfer sts from 1 x 1 rib. T.2 rib 10 rows. Cast off.

**FRONT:** Work as for Back to \*\*. Dec at ea end of next and foll 4th (3rd-alt-alt) rows 12 (16-10-13) times in all, C and D only, then in foll 3rd rows 9 times. ALL SIZES 91 (91-93-95) sts. Knit 1 row. **SHAPE NECK.** NOTE R/C and card row No. Knit 59 (59-61-63) sts at opp end to carr off manually on to waste yarn. Push needles into A pos. Knit 1 row. Dec at ea end of next and foll 3rd rows 15 times in all - 2 sts. Work 2 tog. Fasten off. Bring rem needles back into B pos. Join in yarn and cast off centre 27 (27-29-31) sts. Work other side to correspond.

**SLEEVES:** T.0. Cast on 77 (79-83-87) sts for 1 x 1 rib. T.2 Rib 10 rows. Take work off machine on waste yarn. Bring 113 (117-123-129) needles on Main Bed into "B" pos. Replace work, inc evenly across row. T.4 Knit 3 rows. Set Punch Card. R/C 0. T.4 work 36 rows. **SHAPE TOP.** R/C 0. Cast off 3 sts at beg of next 2 rows. Dec at ea end of next and foll 3rd rows 4 (5-2-2) times in all - 99 (101-113-119) sts, then in foll alt rows 36 (37-43-46) times. Work 1 row. R/C reads 88 (94-94-100) - 27 sts. Cast off.

**FRONT NECKBAND:** Join front raglans. Wrong side facing, pick up 141 (147-147-153) sts evenly across tops of sleeves and around neck. T.5 Knit 1 row. Transfer sts for 1 x 1 rib T.2 rib 10 rows. Cast off.

**TO MAKE UP:** Press lightly. Join back raglan and neckband seams. Join side and sleeve seams. Press seams.

# LADY'S COVER-UP

AUP5 - 7



## MATERIALS: PATONS TOUCH OF ICE

	A	B
C.1 50 g balls	4	4
C.2 50 g balls	3	4
C.3 50 g balls	3	4

## MEASUREMENTS:

Fits Bust	cm	75-80	85-90
	ins.	29½-31½	33½-35½
Measures	cm	80	90
	ins.	31½	35½
Length	cm	58	58
	ins.	22¾	22¾
Sleeve Seam	cm	18	18
	ins.	7	7

**TENSION:** T 8.1 = 27 sts and 41 rows to 10 cm (approx 4 ins) over st st. PLEASE CHECK.

**TOP: 1st Strip:** Using C.1 cast on 26 sts for selvedge edge. R/C 0. T 8.1. Knit until R/C reads 190. Cast off.

**2nd Strip:** Using C 2 work as for 1st strip.

**3rd Strip:** Using C 2. Cast on 21 (23) sts for selvedge edge. R/C 0. Knit until R/C reads 476. Cast off.

**4th Strips (2):** Using C 1, cast on 16 (18) sts for selvedge edge. R/C 0. Knit 238 rows. Cast off.

**5th Strips (2):** Using C 2, cast on 23 (25) sts for selvedge edge. R/C 0. Knit until R/C reads 238. Cast off.

**6th Strips (2):** Using C 3, cast on 26 (29) sts for selvedge edge. R/C 0. Knit until R/C reads 238. Cast off.

**7th Strip:** Using C 1, cast on 32 (35) sts for selvedge edge. R/C 0. Knit until R/C reads 237. Cast off 12 (13) sts at beg of next row. Cast on 12 (13) sts at end of next row. Knit until R/C reads 476. Cast off.

**8th Strip:** Using C 2, cast on 21 sts for selvedge edge. R/C 0. Knit until R/C reads 190. Cast off.

**9th Strip:** Using C.3, cast on 16 sts for selvedge edge. R/C 0. Knit until R/C reads 190. Cast off.

**10th Strip:** Using C 1, cast on 18 sts for selvedge edge. R/C 0. Knit until R/C reads 190. Cast off.

**TO MAKE UP:** Join strips as shown in diagram, leaving a slit 12 cm (4¾ ins) long in side seams, and 18 cm (7 ins) long for neck opening. Using 6 strands of each colour 2 (2.5) m 78¾ (98½) ins long, make a plait and sew around slits and lower edge. Make plaits for neck edge and sleeves in same manner, using yarn 1.5 m (59 ins) long for neck edge and 1 m (39¾ ins) long for sleeve edges. Using 12 strands of ea colour yarn 2.5 m (98½ ins) long make a plait for tie belt.





Pattern AUP5-9

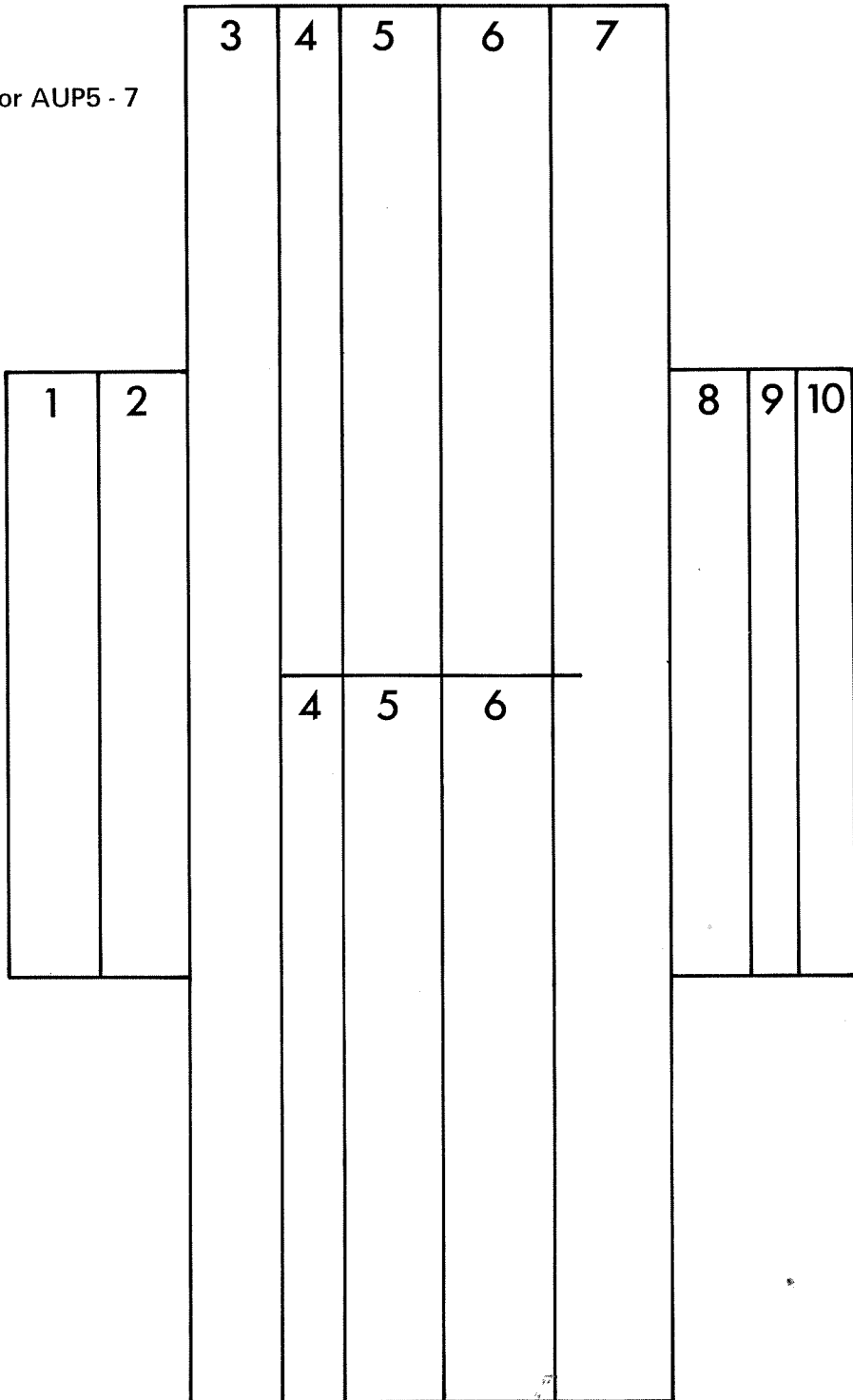




Pattern AUP5-10



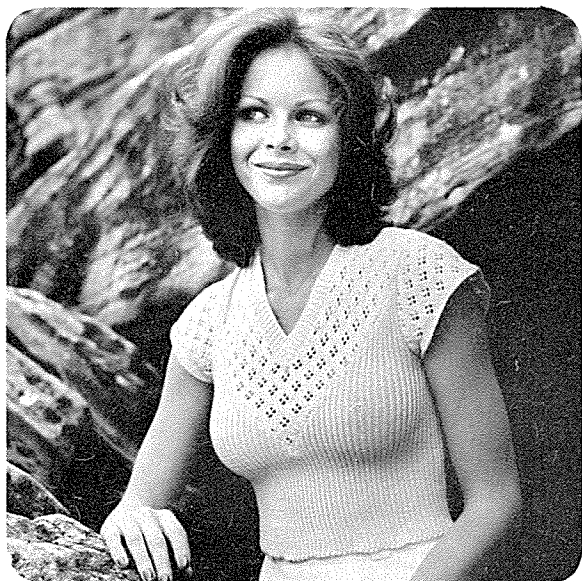
Graph for AUP5 - 7





## LADY'S TOP

AUP5 - 8



### MATERIALS:

PATONS GEM

	A	B	C	D
50 g balls	5	6	7	8
or 200 g balls	2	2	2	2

3.5 (No 10-11) Crochet Hook.

### MEASUREMENTS:

Fits Bust	cm	75	80	85	90
	ins.	29½	31½	33½	35½
Measures	cm	75	80	85	90
	ins.	29½	31½	33½	35½
Length	cm	41	42	43	44
	ins.	16	16½	17	17¼

**PATTERN:** Card No 412 No. 5 Vol 6. LACE.

**TENSION:** T 5.2 = 26½ sts and 40 rows to 10 cm (approx 4 ins) over patt. PLEASE CHECK.

**BACK:** T 0. Cast on 99 (105-113-119) sts for 1 x 1 rib. R/C 0. T 4. Rib until R/C reads 84 (84-88-88). SHAPE ARMHOLES R/C 0. Cast off 5 (6-8-9) sts at beg of next 2 rows. Dec at ea end of next and foll alt rows 5 (6-6-7) times in all — 79 (81-85-87)

sts. Rib until R/C reads 31 (33-33-35). Transfer sts to Main Bed. Set Punch Card. T 5.2 work in patt until R/C reads 67 (71-71-75). SHAPE SHOULDERS. Cast off 8 (9-9-9) sts at beg of next 4 rows, then 9 (8-9-10) sts at beg of foll 2 rows. Cast off rem 29 (29-31-31) sts.

**FRONT:** T.0. Cast on 99 (105-113-119) sts for 1 x 1 rib. R/C 0 T 4 Rib until R/C reads 48. DIVIDE FOR YOKE. Knit 50 (53-57-60) sts at opp end to carr manually on to waste yarn. Push needles into A pos. Dec at centre of work in 3rd and foll alt rows 17 (17-19-19) times in all. 32 (35-37-40) sts. Work 1 row. SHAPE ARMHOLE: Cast off 5 (6-8-9) sts. at beg of next row and dec at end. Dec at ea end of foll alt rows 5 (6-6-7) times — 16 sts. \*\* Work 1 row, dec at neck edge in next 2 rows. Rep from \*\* 6 times — 2 sts. Work 2 tog. Fasten off. Bring rem needles back into B pos. Join in yarn and work other side to correspond, working a dec at centre front.

**FRONT YOKE:** Cast on 3 sts for selvedge edge. T 5.2 Knit 3 rows. Set Punch Card. R/C 0. Work in patt inc at ea end of 3rd and foll alt rows 19 (19-21-21) times in all — 41 (41-45-45) sts. Knit 21 (21-23-23) sts at opp end to carr manually on to waste yarn. Push needles into A pos. NOTE R/C and Card row No. Work 1 row. Inc at end of next and foll alt rows 19 (20-20-21) times in all AT THE SAME TIME dec at beg of 5th foll 4th rows 9 (9-10-10) times — 30 (31-32-33) sts, then in foll 6th rows 5 times — 25 (26-27-28) sts. Work 4 (8-4-8) rows. SHAPE SHOULDER: Cast off 8 (9-9-9) sts at beg of next row and foll alt row. Work 1 row. Cast off rem 9 (8-9-10) sts. Bring rem sts back into B pos. Join in yarn and work other side to correspond, working a dec at centre front in 1st row.

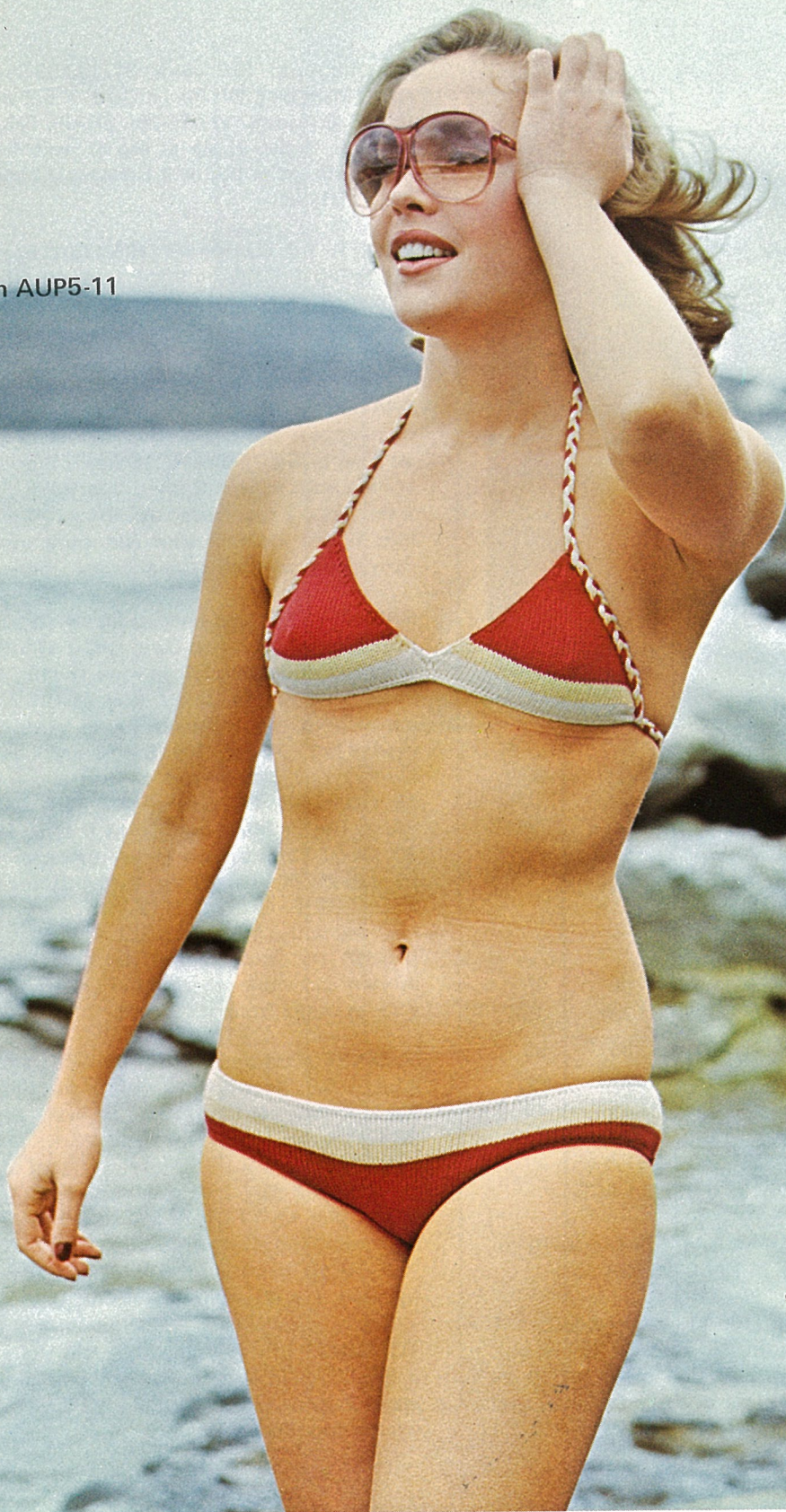
**SLEEVES:** Cast on 97 (101-101-105) sts for selvedge edge. T 5.2. Knit 3 rows. R/C 0. Start Punch Card. Work 2 rows. Dec at ea end of every row 36 (38-38-42) times. Cast off rem 25 sts.

**NECKBAND (2):** Join shoulder seams. Wrong side facing, pick up 79 (83-83-87) sts evenly from centre back neck and along neck edge. T 6.2. Knit 1 row. Transfer sts for 1 x 1 rib. Inc. 1 st at centre back for seam T 3. Rib 10 rows. Cast off.

**TO MAKE UP:** Press lightly. Join yoke to Front bodice. Sew in sleeves. Sew up side and neckband seams, mitring at "V" Work 2 rows d c evenly around sleeve edges. Press seams.



Pattern AUP5-11





## LADY'S STOLE

AUP5 - 9



**MATERIALS:**  
PATONS AZALEA

25 g balls

19

3.00 (No 10-11) Crochet Hook.

### MEASUREMENTS:

Width (approx.)	cm	62
	ins	24½
Length	cm	180
(excluding fringe)	ins	70¾

**PATTERN:** Card No. 427. LACE Vol. 9.

**TENSION:** T 4 = 31 sts and 55 rows to 10 cm (approx 4 ins). PLEASE CHECK.

**STOLE:** T 5 Cast on 193 sts for selvedge edge. Knit 5 rows st st. Set Punch Card. R/C 0. T 4. Work in patt until R/C reads 972. Stop Card. T 5. Knit 6 rows. Cast off.

**TO MAKE UP:** Press lightly. Work 2 rows d c evenly along side edges. Make a fringe at both ends of stole as follows: Wind yarn around a piece of cardboard 30.5 cm (12 ins) wide and cut along one edge. Take 12 strands and fold in half. Pull a loop through the first st of narrow edge of stole and knot firmly. Make other tassels at equal intervals along narrow edge. Knot twice more as illustrated.

## SHAWL

AUP5 - 10



### MATERIALS:

PATONS TOUCH OF ICE

M.C. 50 g balls 5

C.C. 50 g balls 4

Crochet Hook.

### MEASUREMENT:

Length 84 cms (33 ins).

**TENSION:** T 8.1 = 27 sts and 41 rows to 10 cm (approx 4 ins) over st st. PLEASE CHECK.

**SHAWL:** Make 2 pieces having carr at opp end of machine for each piece.

Using M.C. cast on 195 sts for selvedge edge. \*\* T.8.1 Knit 21 rows. Cast off 13 sts at beg of next row \*\* Using C.C. rep from \*\* to \*\*. Cont in this manner until all sts are worked off.

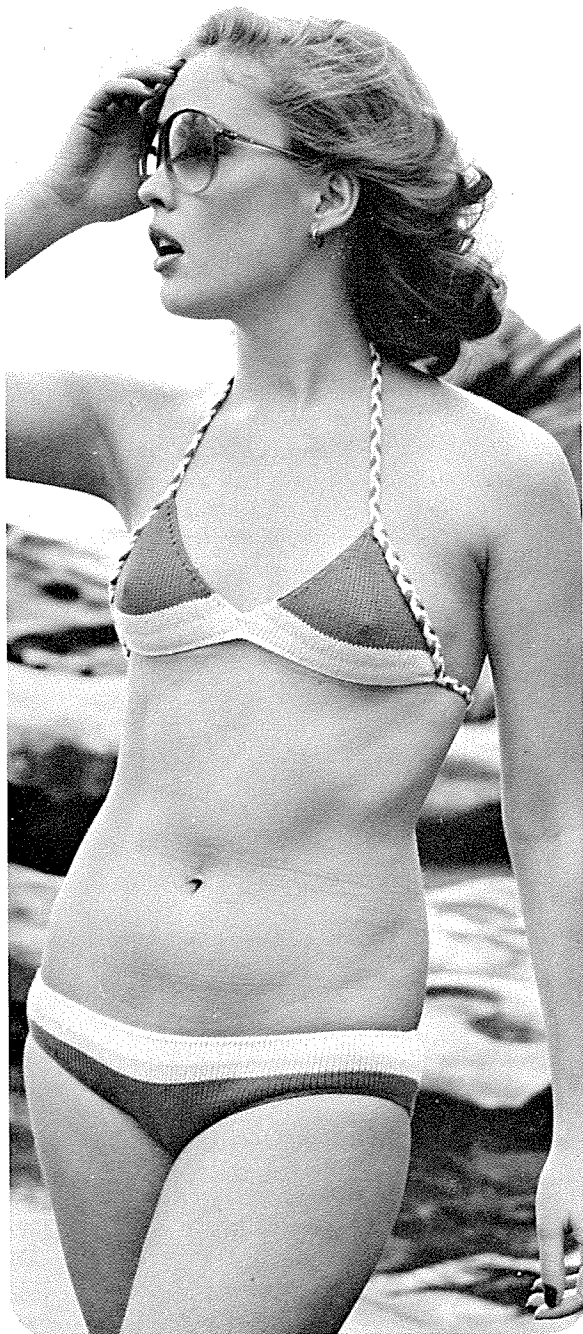
**TO MAKE UP:** Join centre seam. Using M.C. Work 2 rows d c along top of shawl.

**FRINGE:** Wind yarn around a piece of cardboard 20 cm (7¾ ins) wide. Cut along one edge. Using 12 strands of matching yarn and crochet hook fold yarn

in half and draw loop through a st at cast off point of stripe, draw ends through and tighten. Rep along both shaped edges of shawl.

## LADY'S BIKINI

AUP5 - 11



### MATERIALS:

PATONS GEM

	A	B	C
M.C. 50 g balls	1	1	2
C.C.1 50 g balls	1	1	1
C.C.2 50 g balls	1	1	1

3.50 (No. 10-11) Crochet hook. Round elastic.

### MEASUREMENTS:

Fits Bust	cm	75	80	85
	ins.	29½	31½	33½

**TENSION:** T6.2 = 29½ sts and 38 rows to 10 cm over st st. PLEASE CHECK.

### BIKINI PANTS

**BACK:** Using C.C.1 cast on 100 (108-116) sts for selvedge edge R/C.0 T6.2 Knit 6 rows. Using C.C.2 knit 6 rows. Using M.C. knit until R/C reads 18 \*\*. Dec at ea end of next and foll alt rows 18 (18-16) times in all — 64 (72-84) sts. Work 1 row. Cast off 2 sts at beg of next 24 (28-34) rows. Knit 8 rows. R/C reads 86 (90-92). Cast off rem 16 sts.

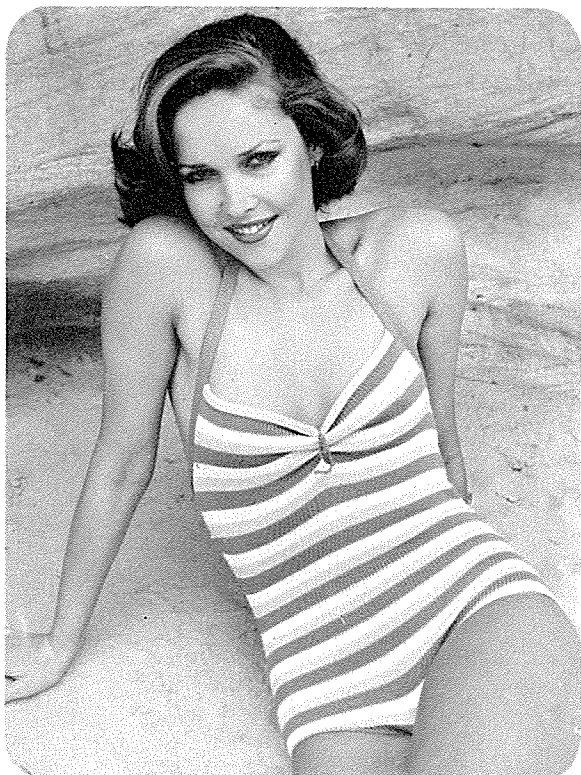
**FRONT:** Work as for Back to \*\*. Cast off 22 (24-27) sts at beg of next 2 rows, 3 sts at beg of next 4 (4-8) rows, then 2 sts at beg of next 14 (16-12) rows. Knit 10 (10-12) rows. R/C reads 48 (50-52) cast off rem 16 sts. Top (2) Using C.C.1. Cast on 40 (44-48) sts for selvedge edge R/C.0. T6.2 knit 6 rows. Using C.C.2 Dec at ea end of next and foll alt rows 3 times in all 34 (38-42) sts. Knit 1 row. Using M.C. dec at ea end of next and foll alt rows, 16 (18-20) times in all — 2 sts. Work 2 tog. Fasten off.

**TO MAKE UP:** Join crotch and side seams of pants and catch top together at centre front. Using matching colours. Work 1 row dc with elastic around all edges. Using 10 strands of yarn in each colour 2.5m (98½ ins) long, make a plait and sew around top as illustrated.



## LADY'S SWIMSUIT

AUP5 - 12



### MATERIALS: PATONS GEM

	A	B	C
M.C. 50 g balls	2	2	2
C.C.1 50 g balls	1	1	2
C.C.2 50 g balls	1	1	1

3.50 (No 10-11) crochet hook; Round elastic, small button.

### MEASUREMENTS:

Fits Bust	cm	75	80	85
	ins.	29½	31½	33½

### PATTERN:

1. Knit 8 rows M.C.
2. Knit 6 rows C.C.1
3. Knit 6 rows C.C.2

**TENSION:** T5.2 = 31 sts and 41 rows to 10 cm (approx 4 ins) over st st. PLEASE CHECK.

**BACK:** Using M.C. cast on 17 sts for selvedge edge. R/C.0 T5.2 work 8 rows \*\*. Keeping stripes correct cast on 2 sts at beg of next 24 (26-36) rows – 65 (69-89) sts. Inc at ea end of next and foll alt rows 18 (20-15) times in all – 101 (109-119) sts. Dec at ea end of foll 8th (6th-6th) rows 8 (10-11) times – 85 (89-97) sts. Work 13 (15-9) rows. Inc at ea end of next and foll 6th rows 8 (10-10) times in all – 101 (109-117) sts. Work until R/C reads 200 (214-214) Cast off.

**FRONT:** Using M.C. cast on 17 sts for selvedge edge R/C.0 T5.2 work 8(12-12) rows in patt. Keeping stripes correct, cast on 2 sts at beg of every row 14 (16-12) times, then 3 sts at beg of every row 4 (4-8) times. Cast on 22 (24-27) sts at beg of foll 2 rows – 101 (109-119) sts. Work 6 (4-4) rows. Dec at ea end of next and foll 8th (6th-6th) rows 8 (10-11) times in all – 85 (89-97) sts. Work 13 (15-9) rows. Inc at ea end of next and foll 6th rows 8 (10-10) times in all – 101 (109-117) sts. Work 13 (11-11) rows. R/C reads 160 (174-174). Cast off 5 (3-5) sts at beg of next 2 rows. Dec at ea end of next and foll alt rows 14 (17-17) times in all – 63 (69-73) sts. Using C.C.1 Work 11 rows R/C reads 200 (220-220). Cast off.

**HALTER STRAP:** T 0. Cast on 11 sts for 1 x 1 rib, inc at ea end of sts on Main Bed after selvedge – 13 sts. R/C 0 T3. Rib 4 rows. Make a buttonhole by moving 6th & 7th sts to adj needles. Leave empty needles in "B" pos. Rib until R/C reads 300 (300-310) Cast off.

**TO MAKE UP:** Press lightly. Join side and crotch seams. Turn under 6 rows on upper edge of front to form facing. Stitch in pos. Gather at centre front to shape bust. Using M.C. Work 1 row dc over elastic around leg edges. Sew on strap and button. Press seams.



# EMPISAL

SUMMER KNITWEAR

BOOK AUP5

