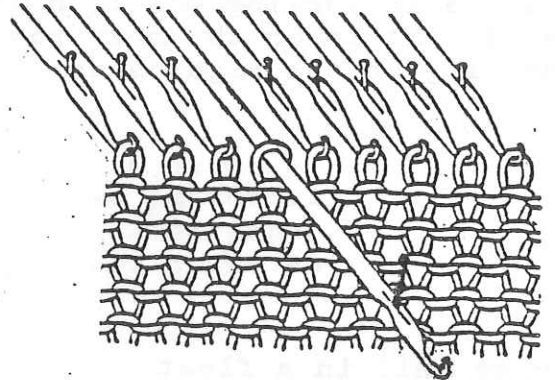


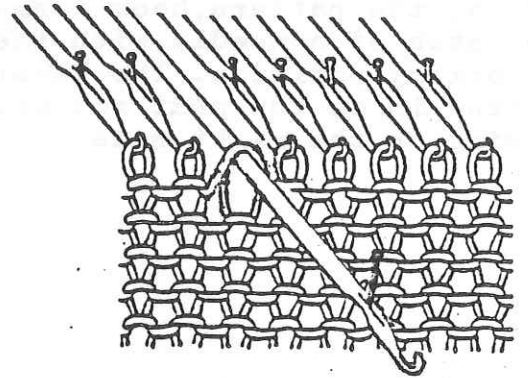
HOW TO KNIT FAIR ISLE

How to knit a Fair Isle stitch

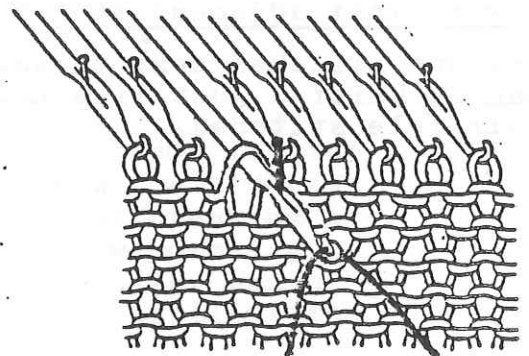
Select the needles on which you want to knit the colour stitches and push them out to holding position.



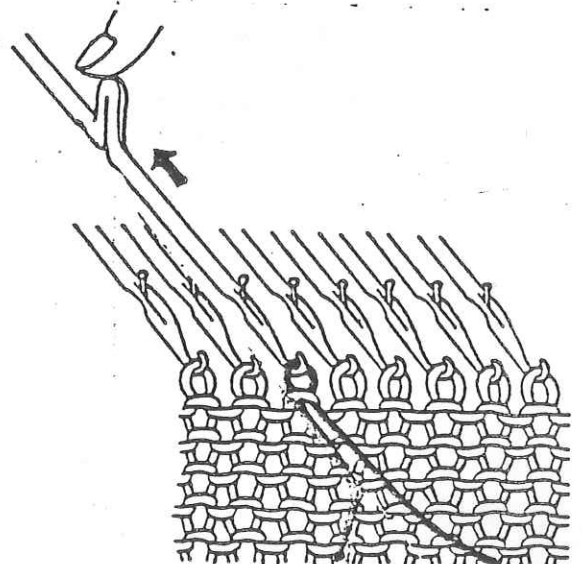
Knit the row. The needles in holding position will not have knitted.



Lay the second colour in the needles that are holding position and knit them through by hand, one by one. Make sure the stitches you knit are the same size as the main knitting and not too large.

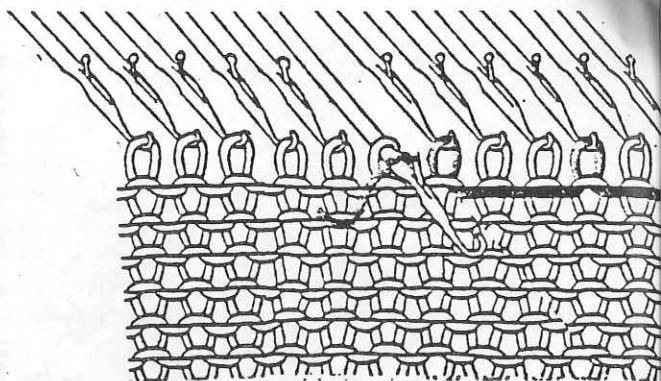


(Put the ball of the second colour on the ground at your feet or in your lap. You can knit in as many different colours in each row as you wish).



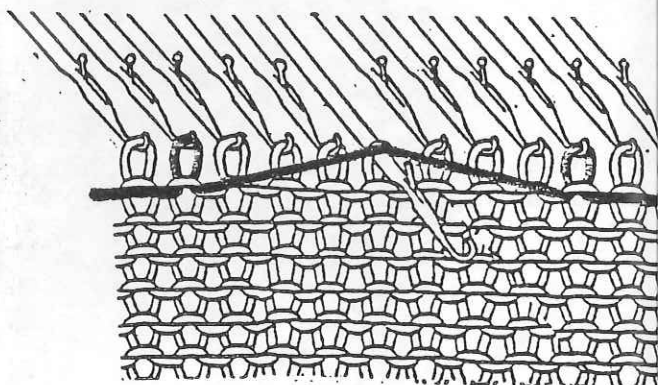
How to knit in the end

Lay the end of the yarn behind the latch of an adjacent needle, with the needle in working position and it will knit in on the next row without showing on the right side.



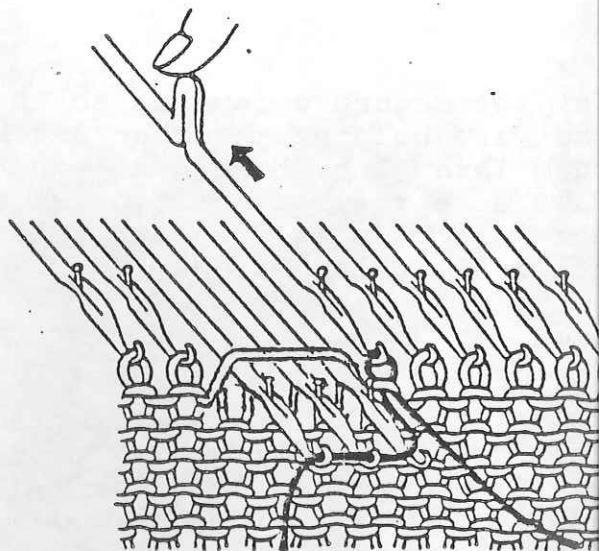
How to knit in a float

To knit in the floats on the reverse side of the pattern, hook them behind the latch of a needle, with the needle in working position. The float will be knitted in on the next row without showing on the right side.



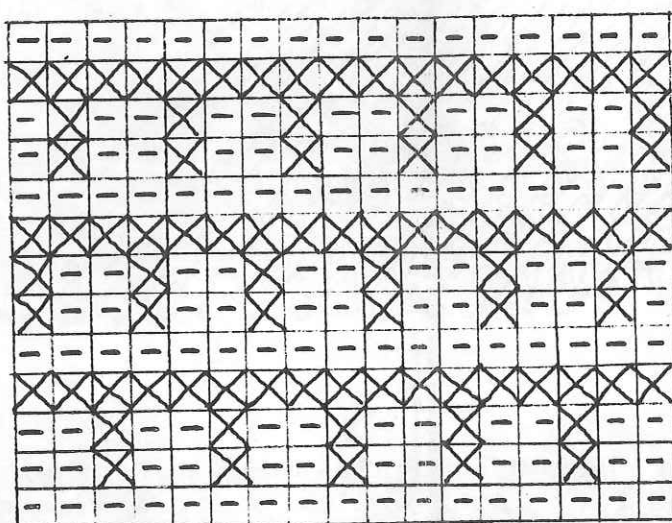
How to knit adjacent stitches

Pattern stitches next to each other can be knitted just like normal Fair Isle stitches.



KNITTING FAIR ISLE PATTERNS

You can knit any traditional Fair Isle pattern in as many colours as you wish. Or you can make up your own patterns. It is a good idea to draw out the pattern on squared paper as shown below. The coloured pattern stitches are shown as X and the main colour stitches as - .



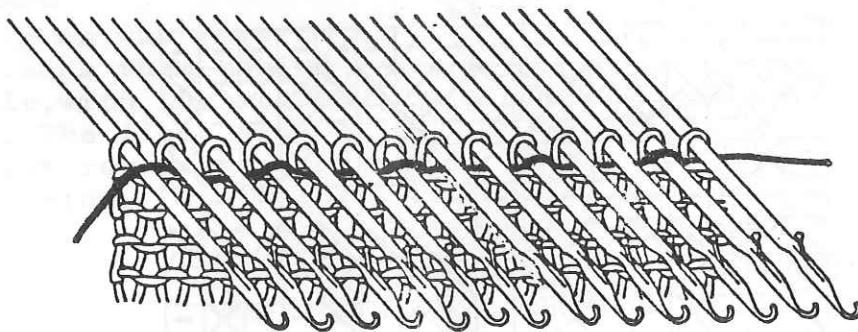
The single lines of second colour are knitted by removing the main colour from the carriage (hook it out from the side of the fabric guide by un-clipping the guide without breaking it). Then, thread up the second colour and knit the row normally. You will need to carry the carriage back to the other end of the knitting to pick up the main colour again to continue the knitting.

It is easy to knit Fair Isle on the machine because you do not need to count stitches to follow the pattern. You can see which needles need to be pushed into holding position to knit the coloured pattern stitches at the beginning of each row.

HOW TO WEAWE

You can create very striking effects on the purl side of the knitting if you weave in yarns with contrasting texture textures to the main knitting.

To weave, push all the needles out to the front, with the knitting pushed back against the machine. Then wind the yarn in and out of the needles, behind the latches as shown below.



Push the weaving yarn back against the knitting. Push the needles back into working position making sure the latches are open. Knit the next row in the usual way.