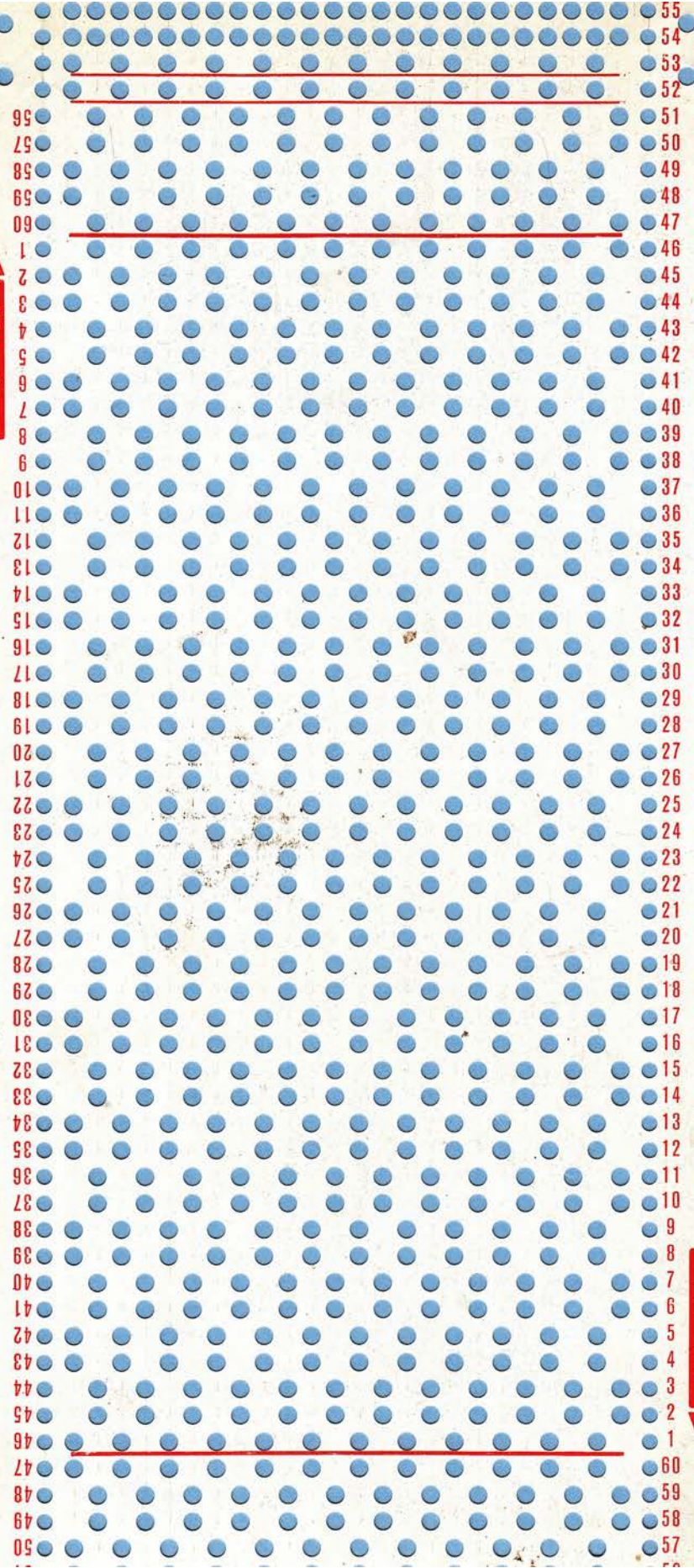




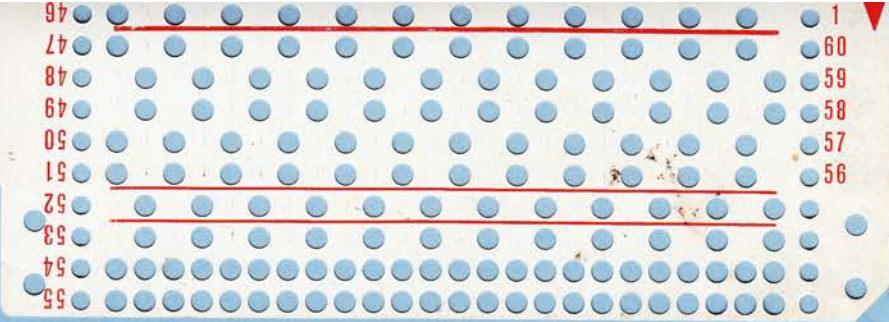
44
45
46
47
48
49
50
51
52
53
54
55

3
2
1
60
59
58
57
56

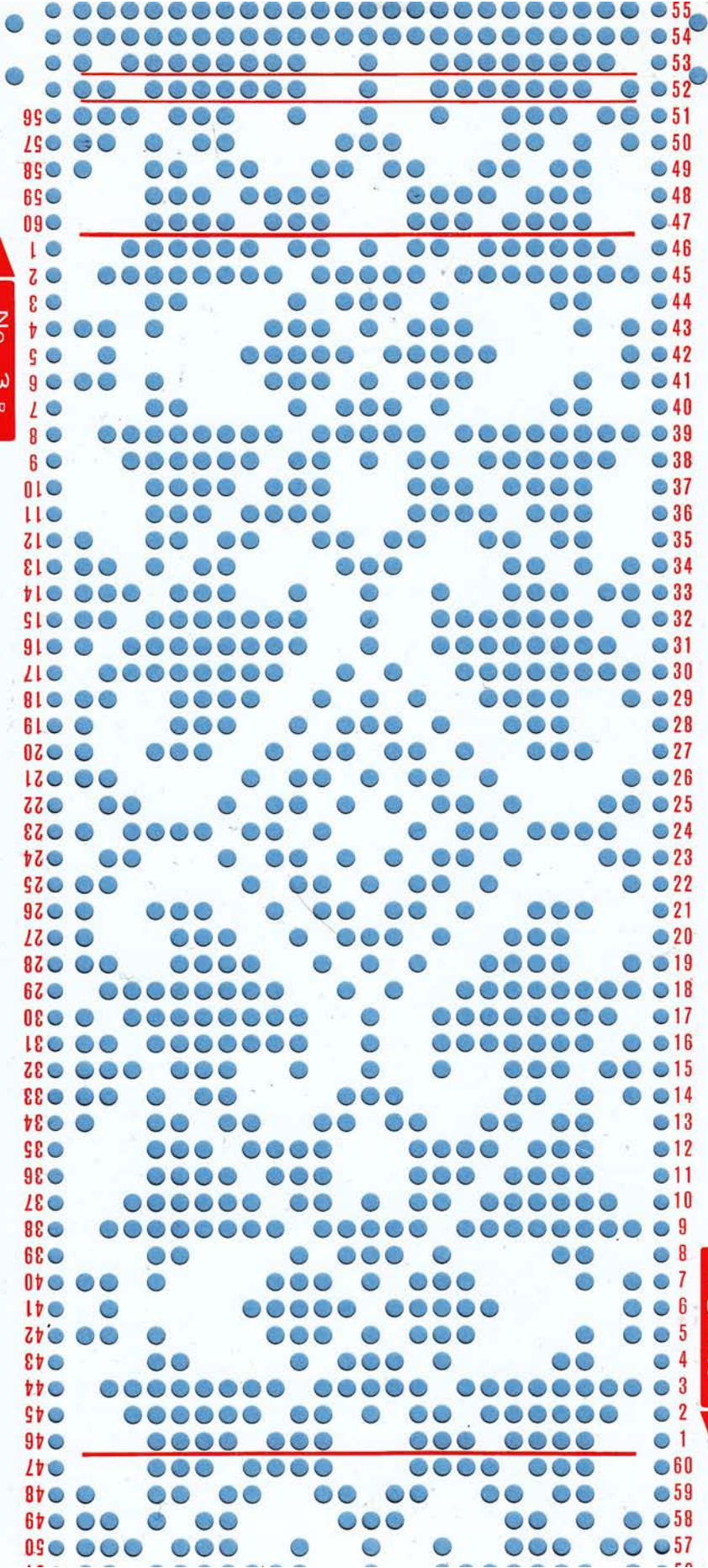
No. 2 B



No. 2 A



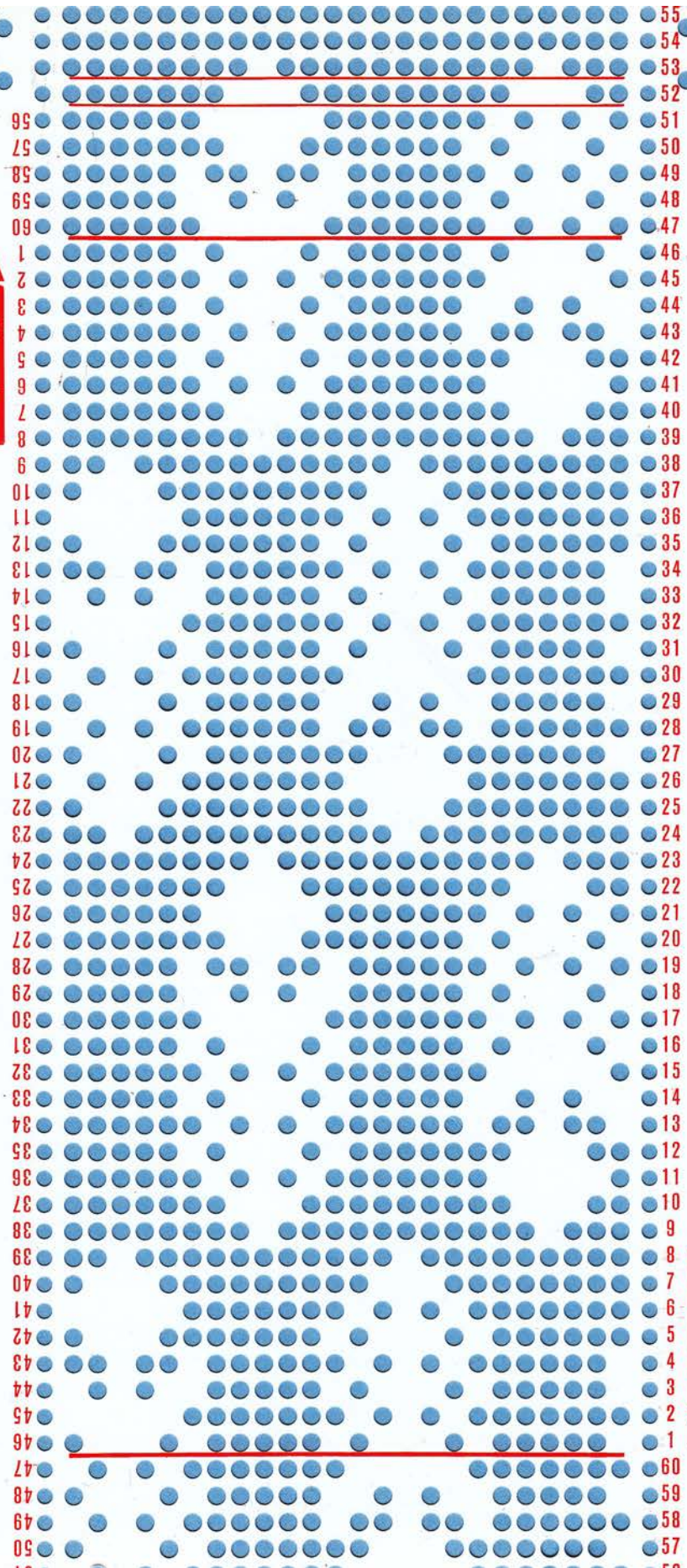
No. 3 B



No. 3 A

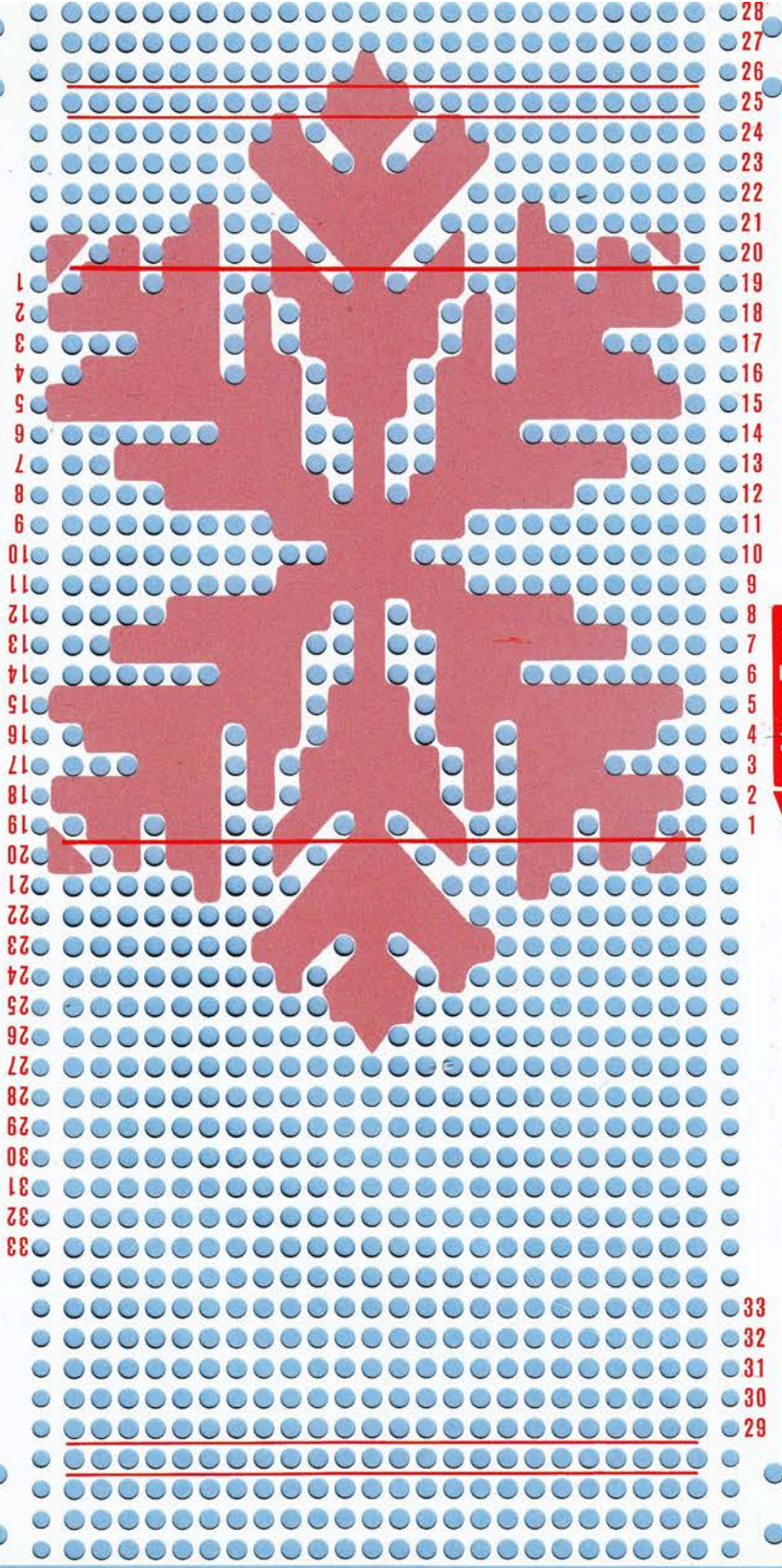
55
54
53
52
51
50
49
48
47
46
45
44
43
42
41
40
39
38
37
36
35
34
33
32
31
30
29
28
27
26
25
24
23
22
21
20
19
18
17
16
15
14
13
12
11
10
9
8
7
6
5
4
3
2
1
60
59
58
57

No. 4 A



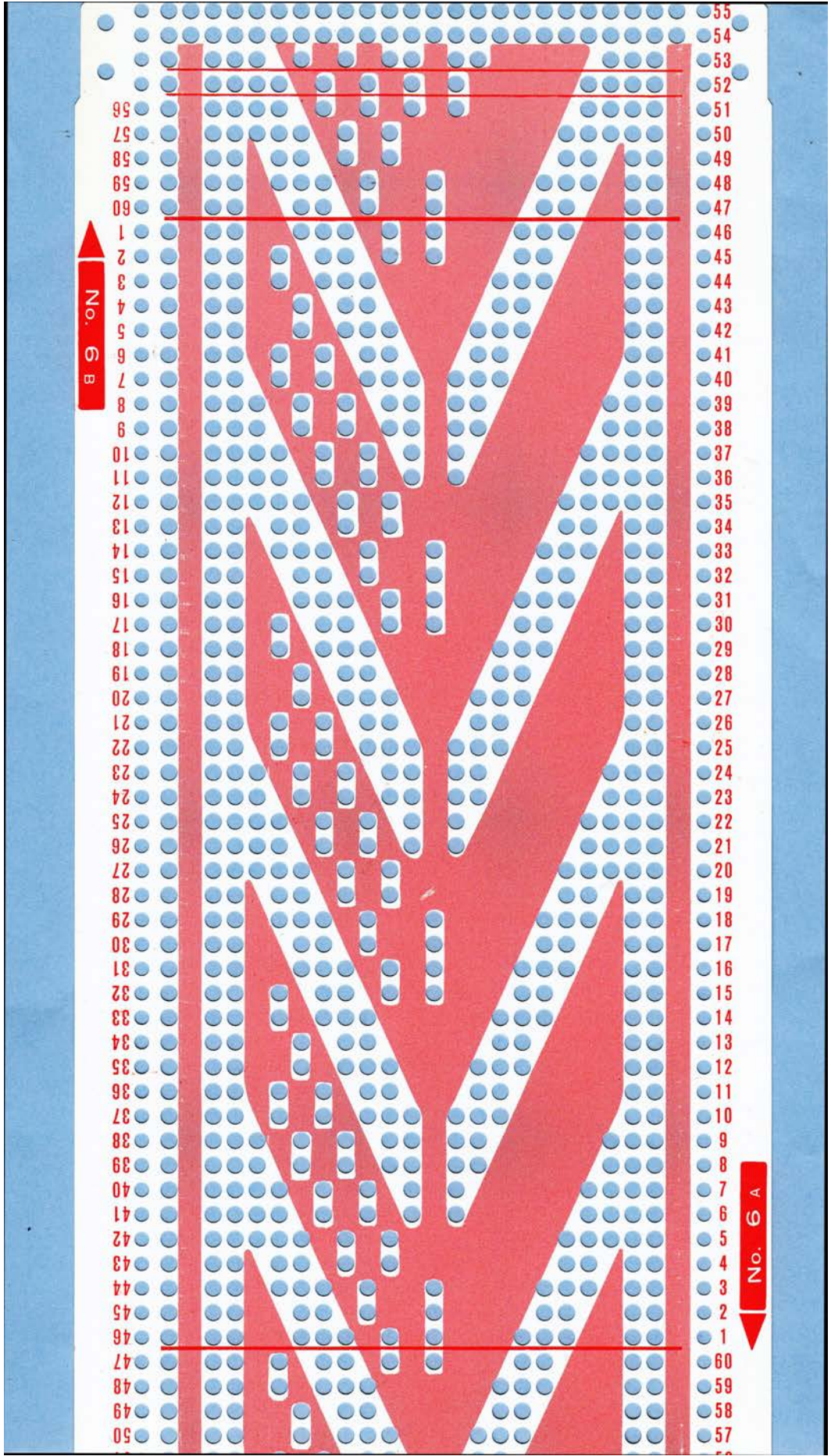
No. 4 B

No. 5 A



No. 5 B

33
32
31
30
29



No. 6 B

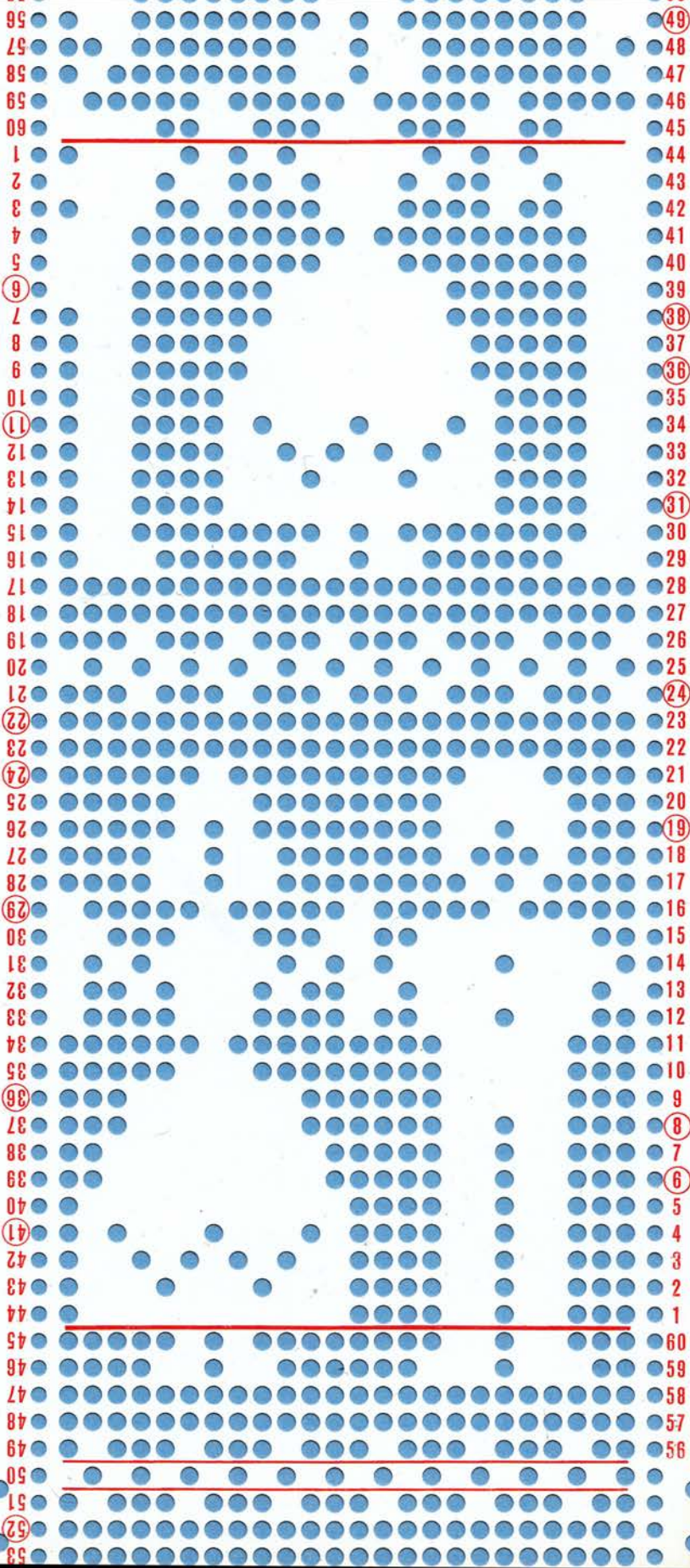
No. 6 A

55
54
53
52
51
50
49
48
47
46
45
44
43
42
41
40
39
38
37
36
35
34
33
32
31
30
29
28
27
26
25
24
23
22
21
20
19
18
17
16
15
14
13
12
11
10
9
8
7
6
5
4
3
2
1
60
59
58
57

56
57
58
59
60
1
2
3
4
5
6
7
8
9
10
11
12
13
14
15
16
17
18
19
20
21
22
23
24
25
26
27
28
29
30
31
32
33
34
35
36
37
38
39
40
41
42
43
44
45
46
47
48
49
50

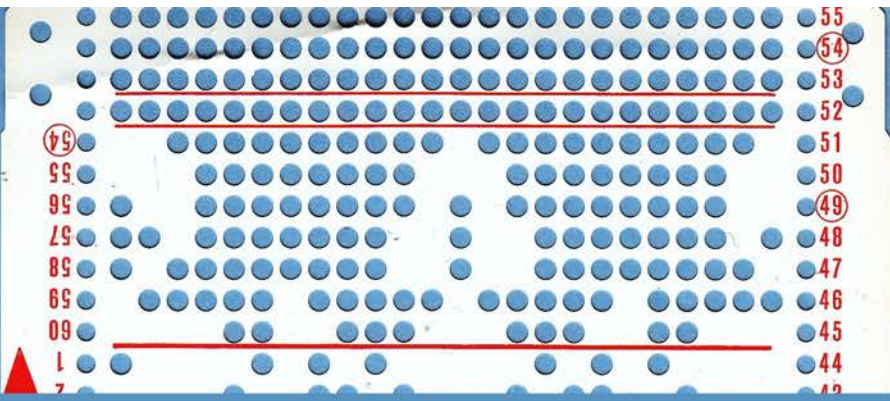
The image shows a white rectangular strip with a grid of blue dots. The strip is oriented vertically. On the left side, there are numbers 44 through 55, arranged from top to bottom. On the right side, there are numbers 3 through 60, arranged from top to bottom. A red arrow points downwards on the right side, between numbers 2 and 1. There are three horizontal red lines across the strip, one between 46 and 47, one between 51 and 52, and one between 52 and 53. The strip is placed on a blue background.

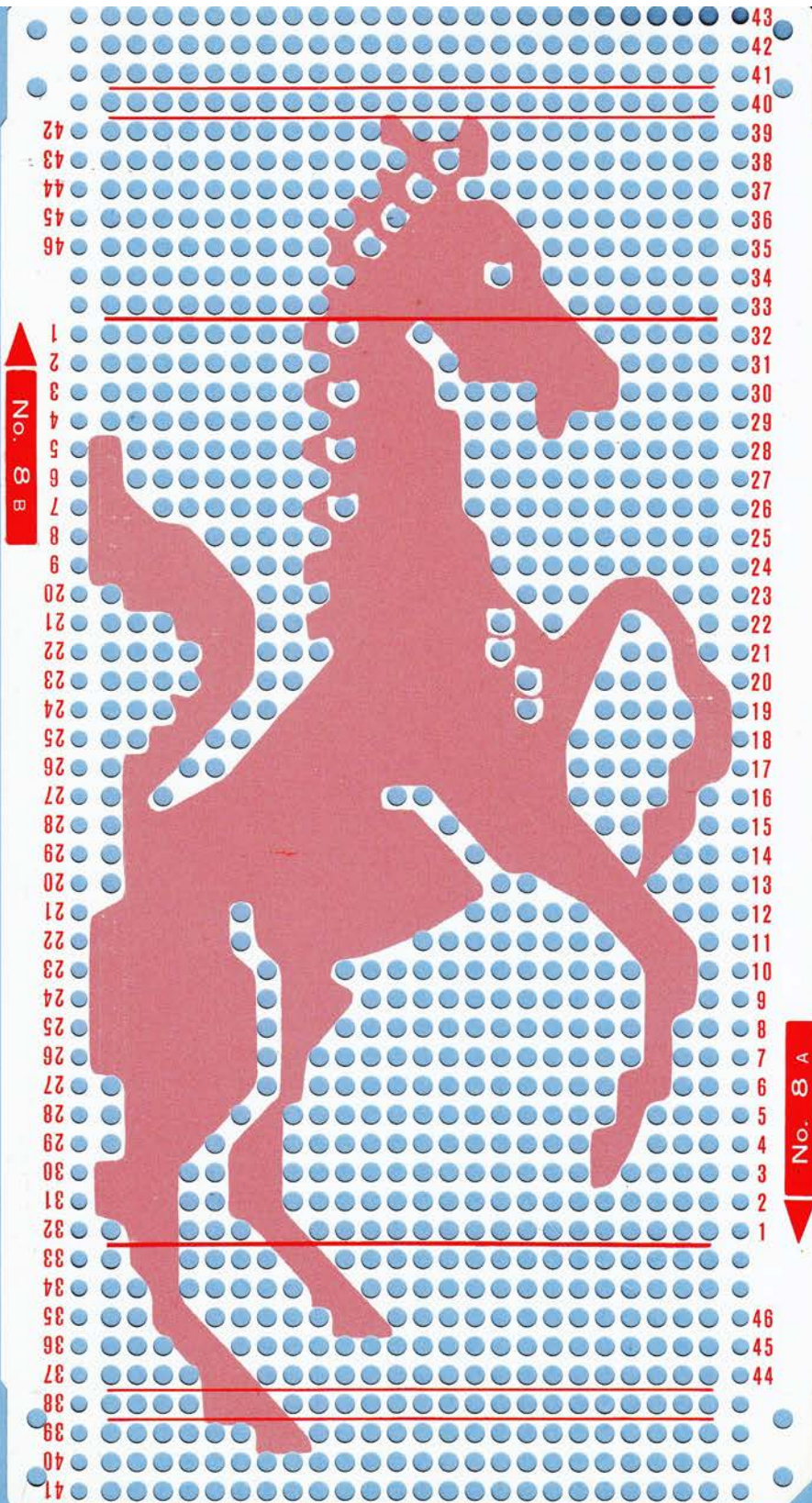
No. 7 B



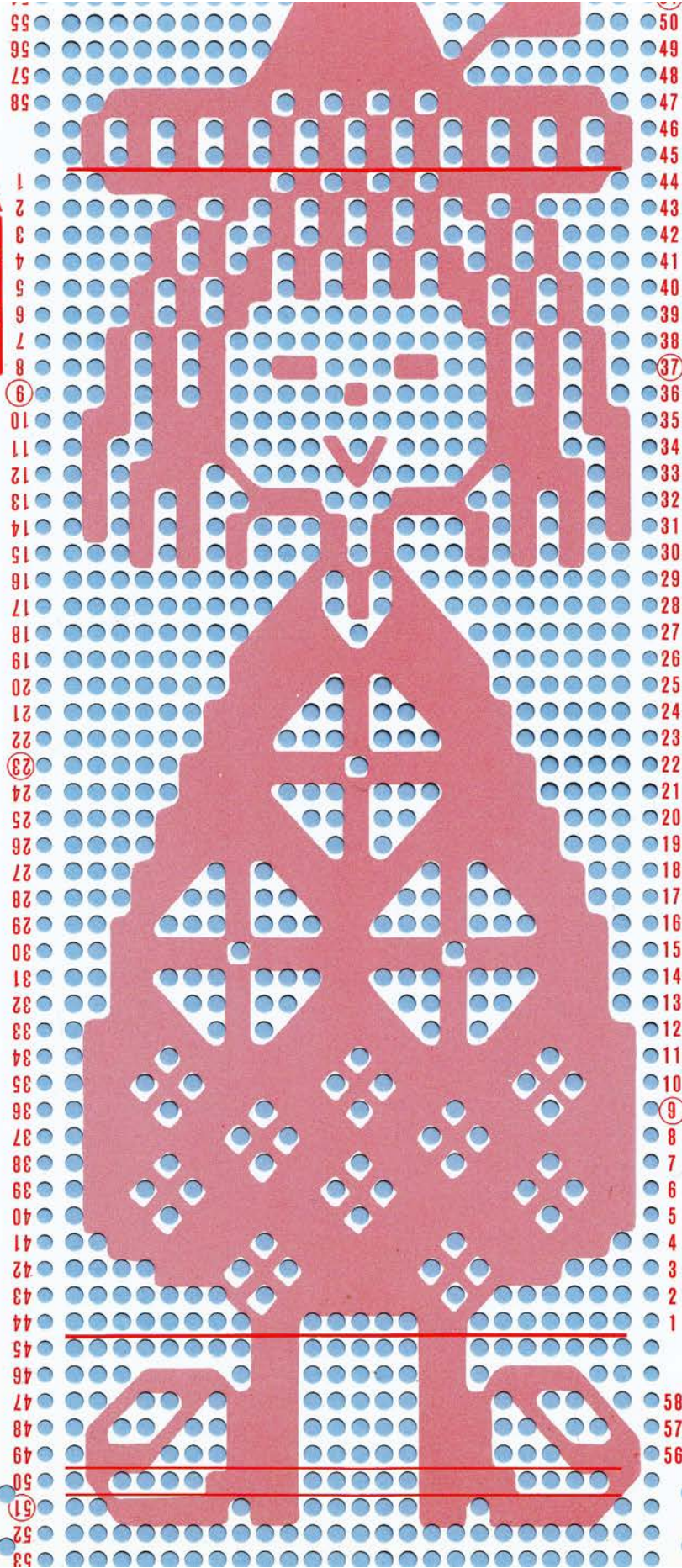
No. 7 A

49
48
47
46
45
44
43
42
41
40
39
38
37
36
35
34
33
32
31
30
29
28
27
26
25
24
23
22
21
20
19
18
17
16
15
14
13
12
11
10
9
8
7
6
5
4
3
2
1
60
59
58
57
56
55
54
53





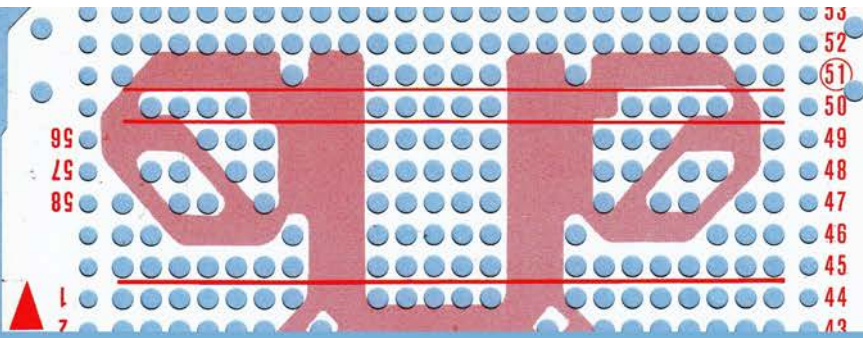
No. 9 B



No. 9 A

55
56
57
58
1
2
3
4
5
6
7
8
9
10
11
12
13
14
15
16
17
18
19
20
21
22
23
24
25
26
27
28
29
30
31
32
33
34
35
36
37
38
39
40
41
42
43
44
45
46
47
48
49
50
51
52
53

50
49
48
47
46
45
44
43
42
41
40
39
38
37
36
35
34
33
32
31
30
29
28
27
26
25
24
23
22
21
20
19
18
17
16
15
14
13
12
11
10
9
8
7
6
5
4
3
2
1
58
57
56



99

79

89

1

7

33

52

51

50

49

48

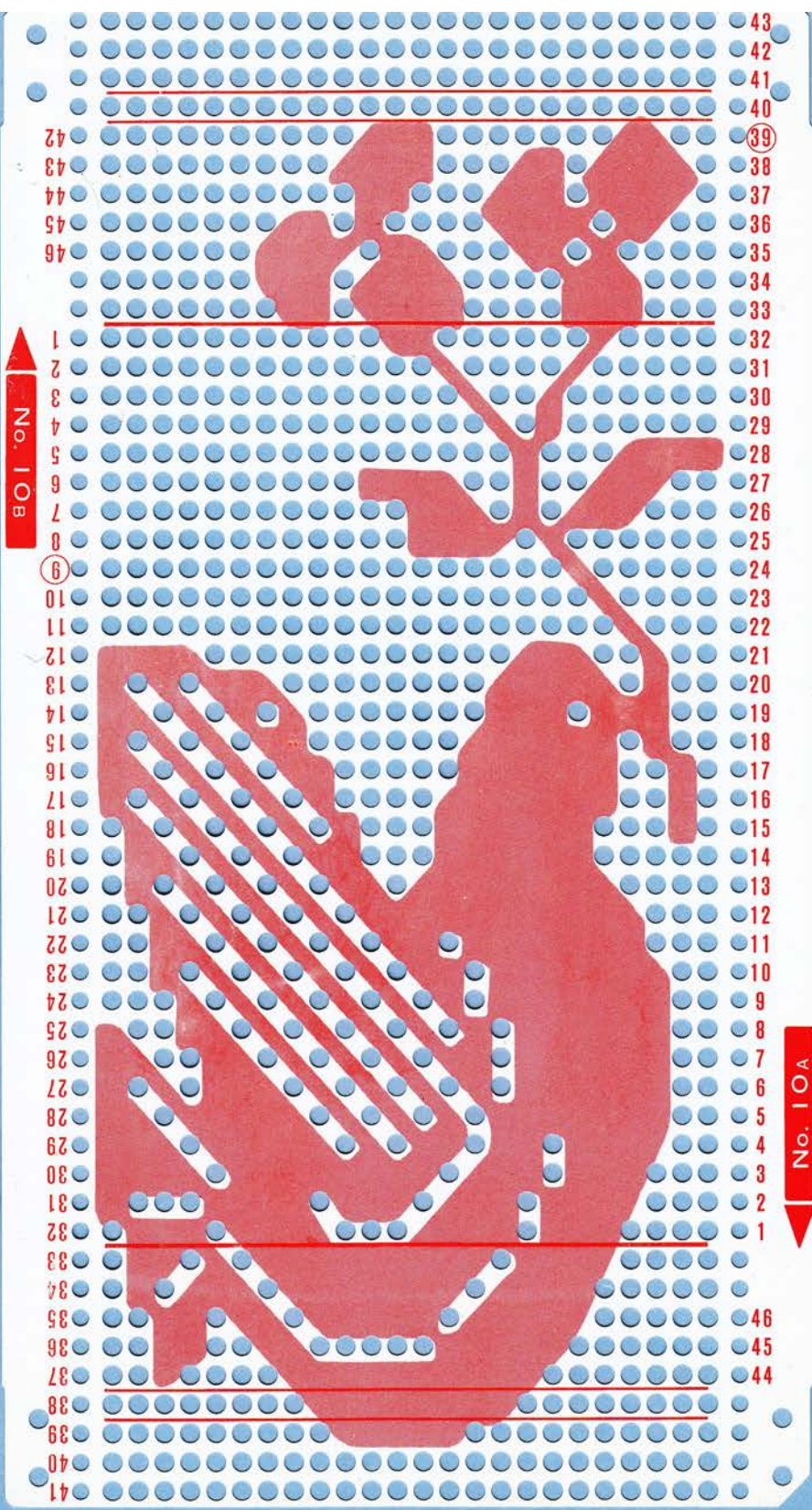
47

46

45

44

43



No. 10B

No. 10A

43
42
41
40
39
38
37
36
35
34
33
32
31
30
29
28
27
26
25
24
23
22
21
20
19
18
17
16
15
14
13
12
11
10
9
8
7
6
5
4
3
2
1
46
45
44
38
39
40
41

No. 11 B

57		50
58		49
59		48
60		47
1		46
2		45
3		44
4		43
5		42
6		41
7		40
8		39
9		38
10		37
11		36
12		35
13		34
14		33
15		32
16		31
17		30
18		29
19		28
20		27
21		26
22		25
23		24
24		23
25		22
26		21
27		20
28		19
29		18
30		17
31		16
32		15
33		14
34		13
35		12
36		11
37		10
38		9
39		8
40		7
41		6
42		5
43		4
44		3
45		2
46		1
47		60
48		59
49		58
50		57
51		56
52		
53		
54		
55		

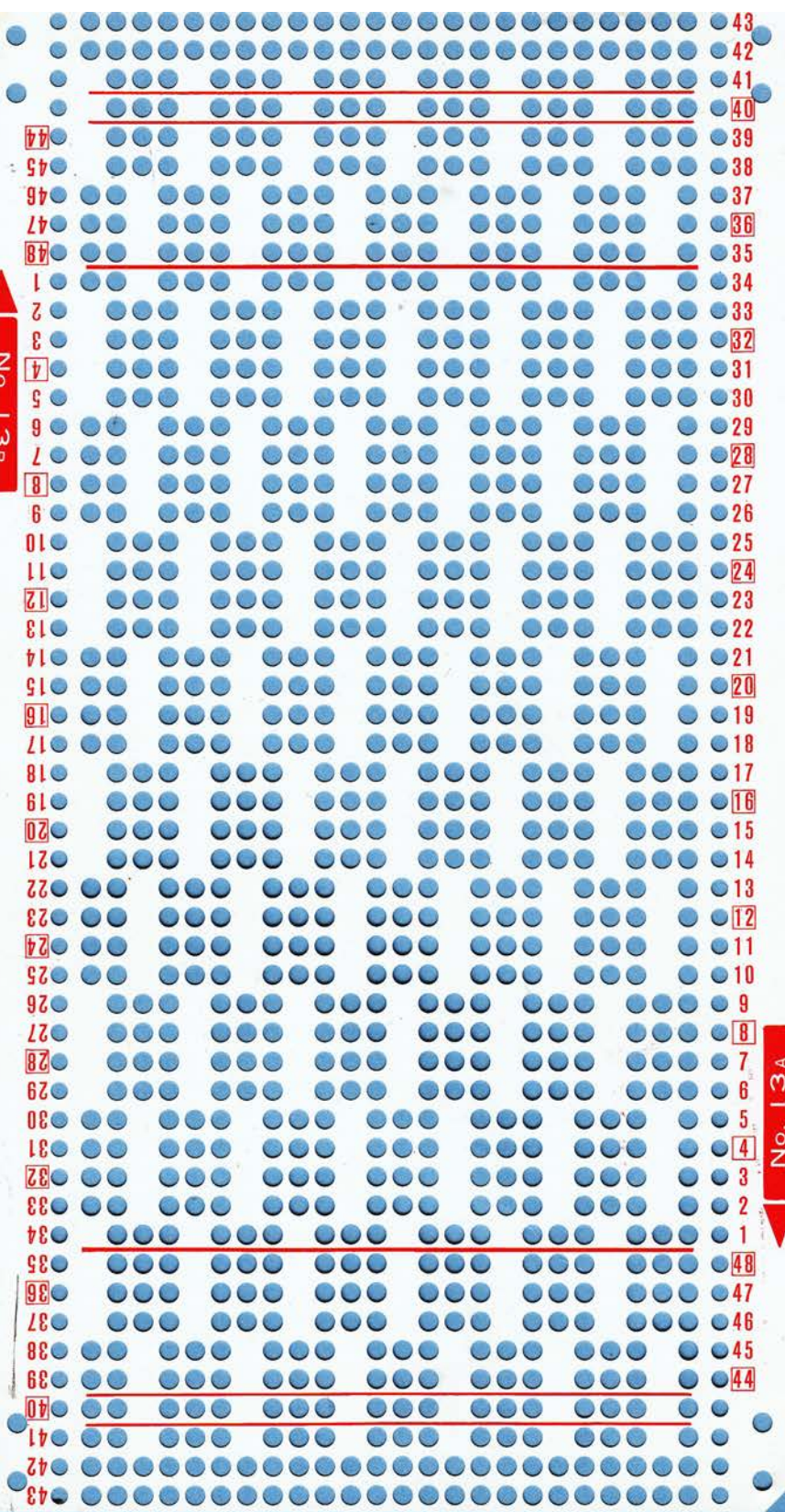
No. 11 A



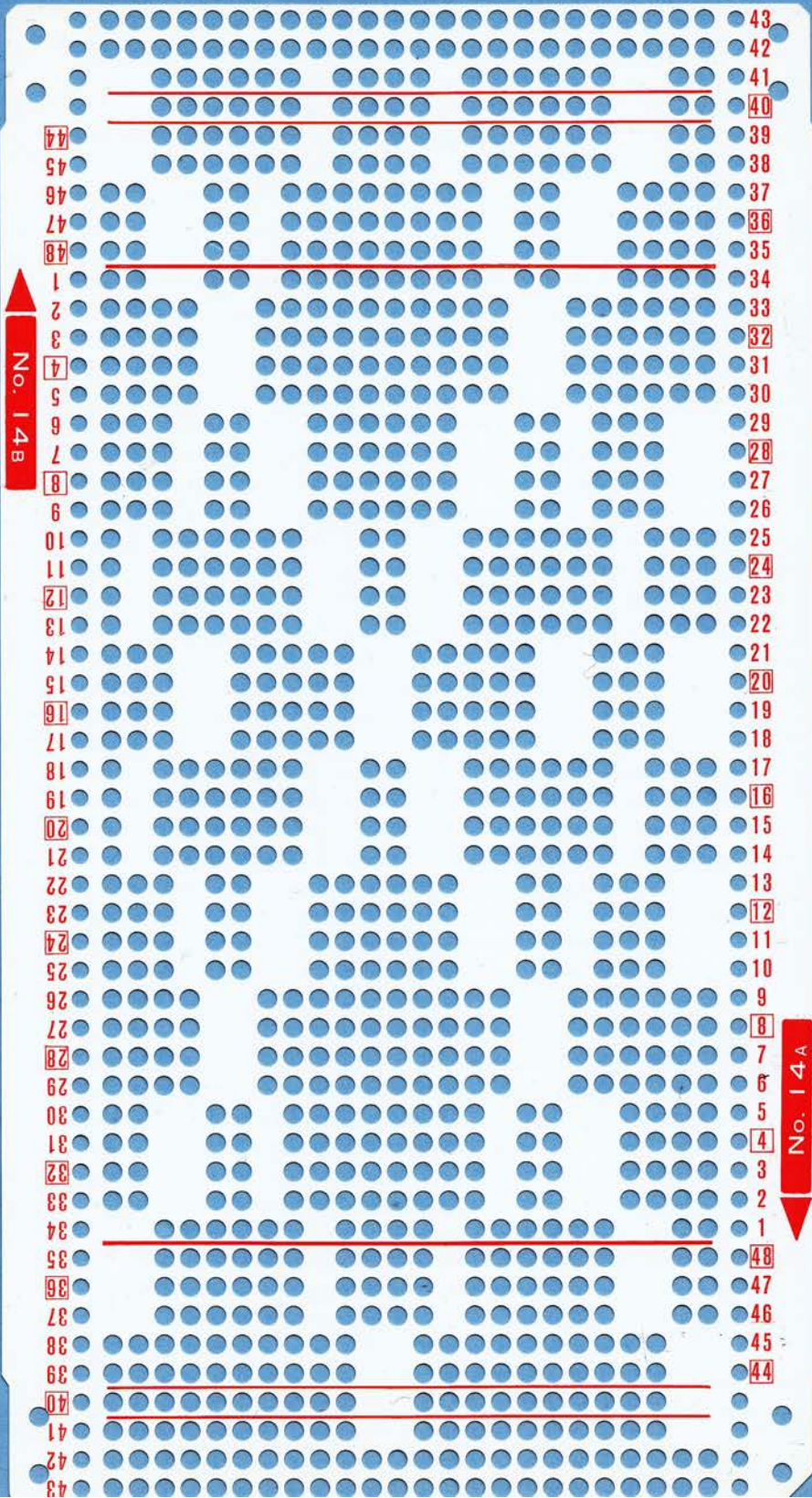
		55
		54
		53
		52
56		51
57		50
58		49
59		48
60		47
1		46
2		45
3		44
4		43
5		42
6		41
7		40
8		39

No. 11 B

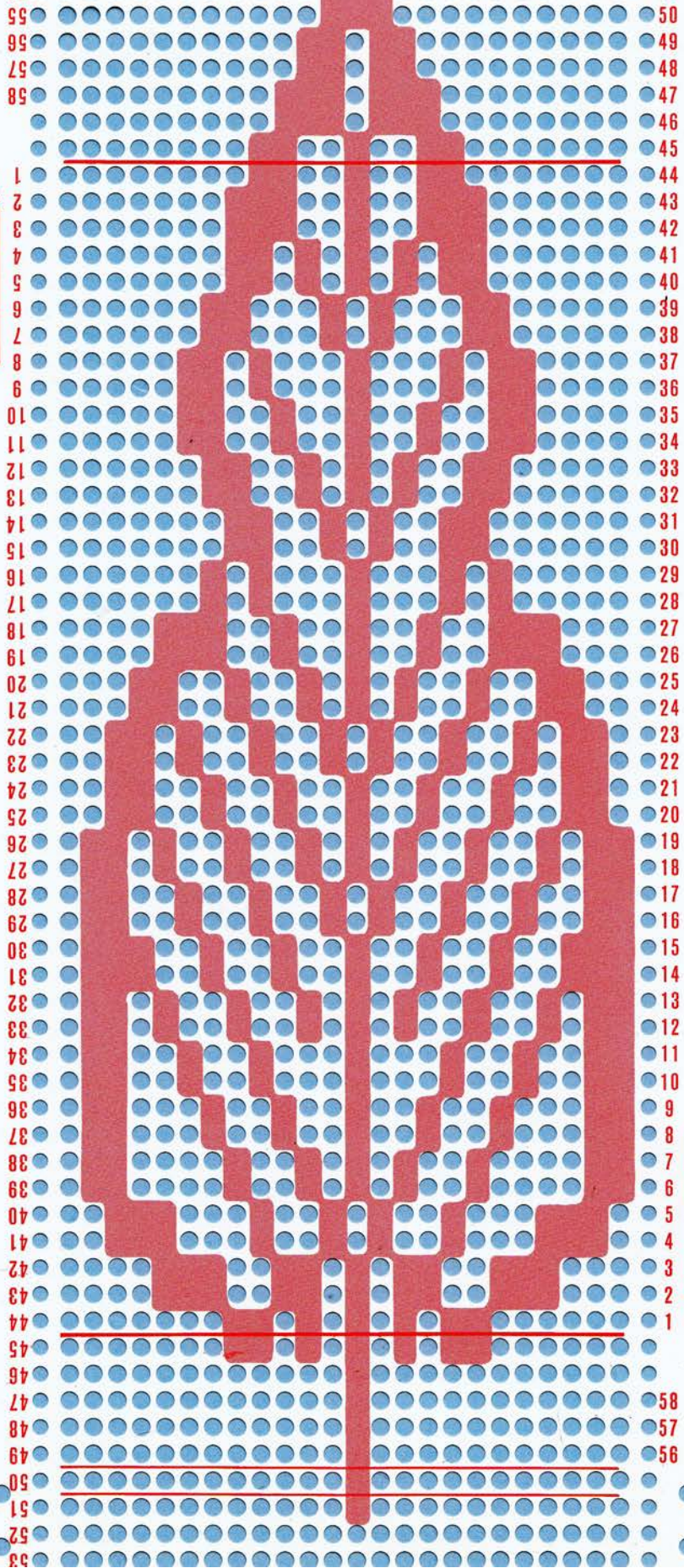
No. 13B



No. 13A

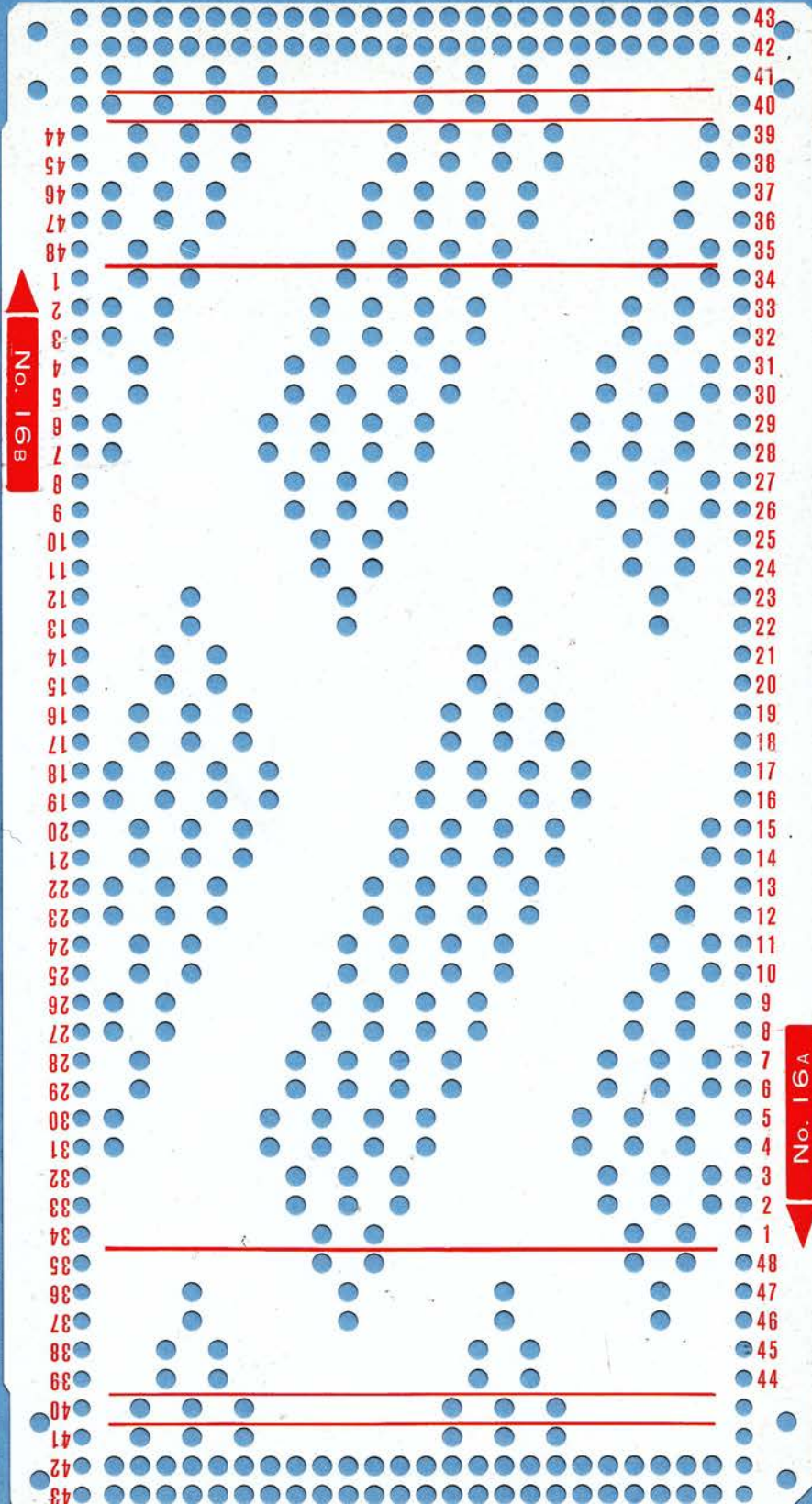


No. 15B



No. 15A

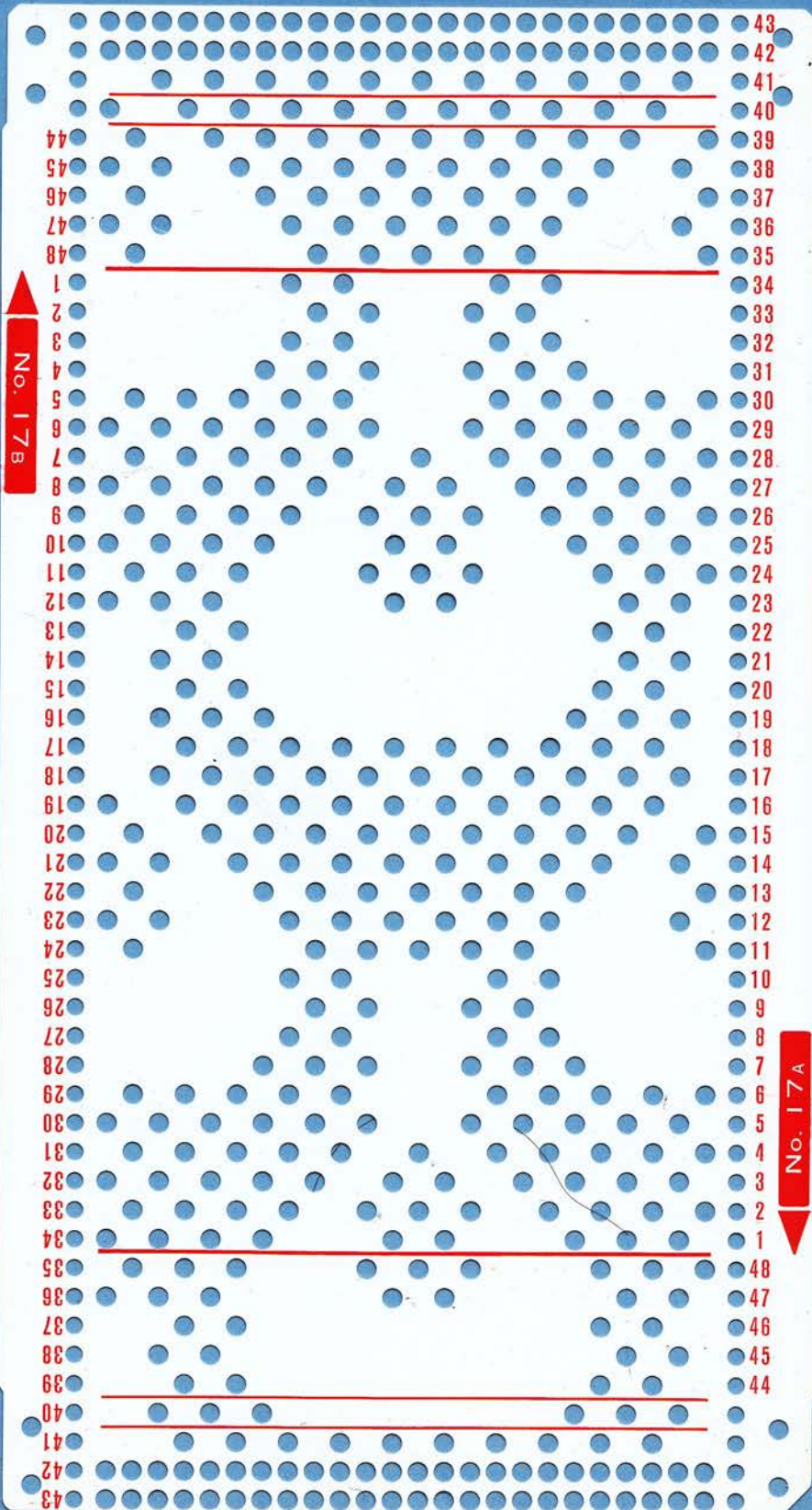




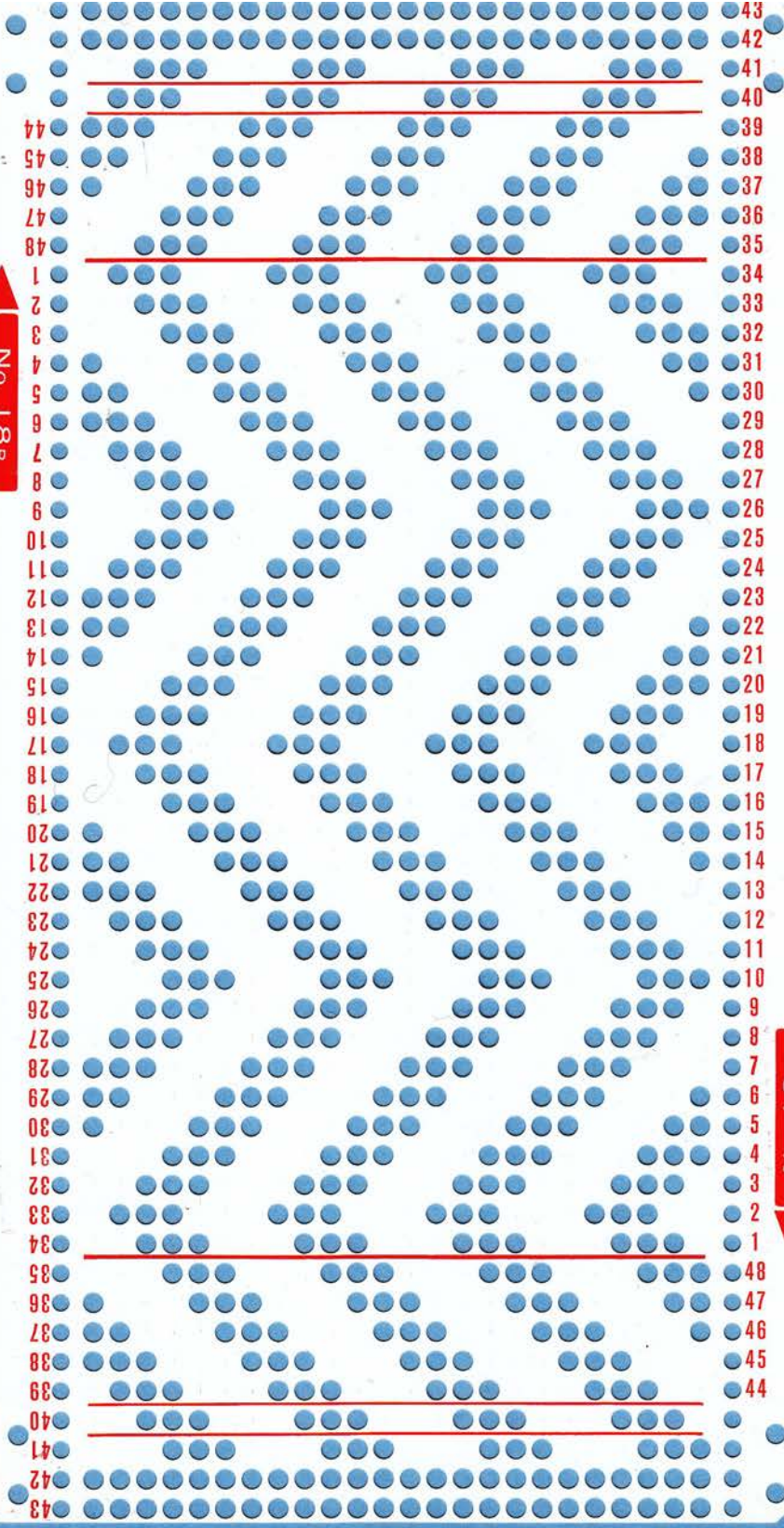
No. 16B

No. 16A

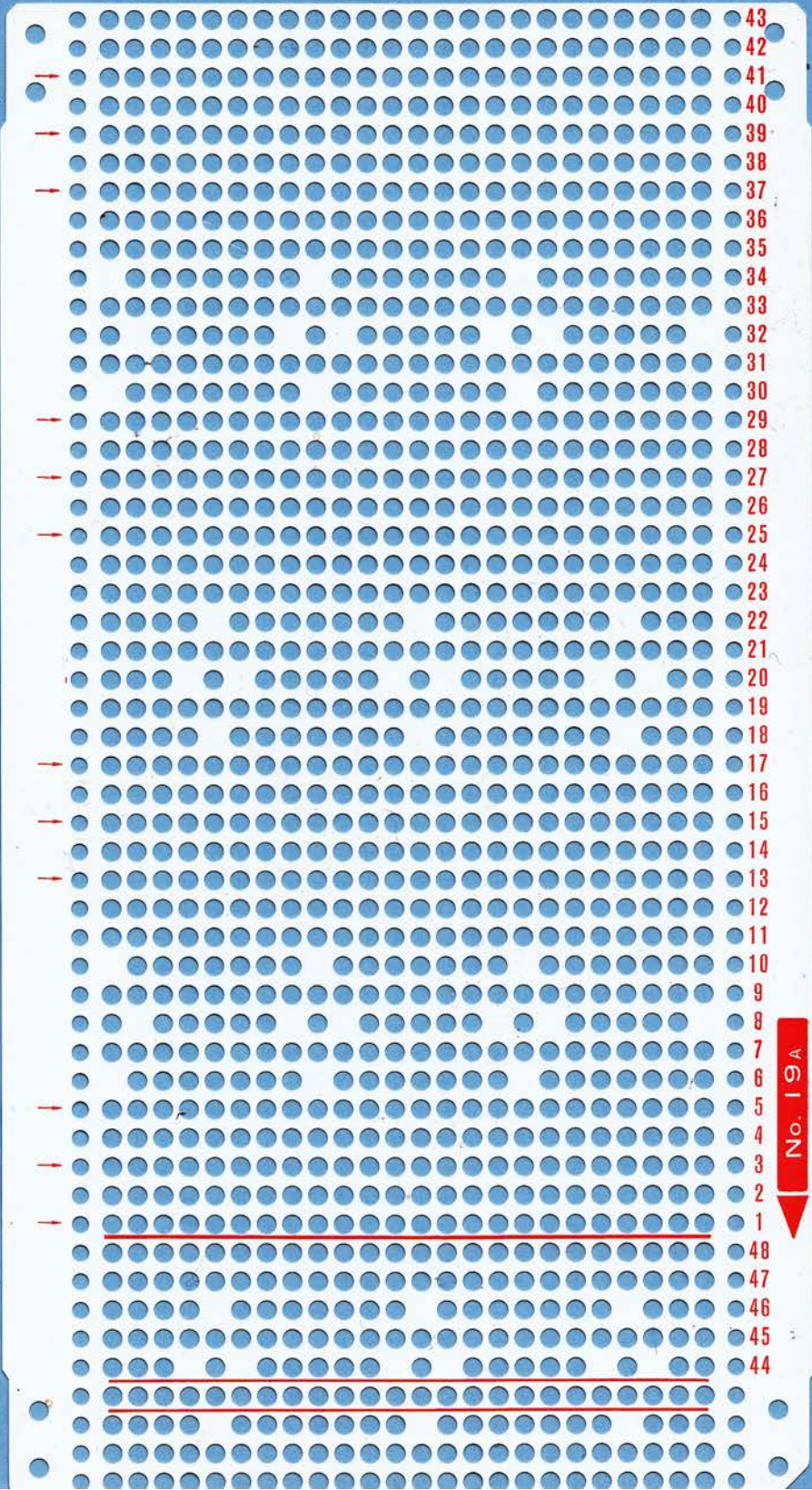
- 43
- 42
- 41
- 40
- 39
- 38
- 37
- 36
- 35
- 34
- 33
- 32
- 31
- 30
- 29
- 28
- 27
- 26
- 25
- 24
- 23
- 22
- 21
- 20
- 19
- 18
- 17
- 16
- 15
- 14
- 13
- 12
- 11
- 10
- 9
- 8
- 7
- 6
- 5
- 4
- 3
- 2
- 1
- 48
- 47
- 46
- 45
- 44



No. 18B

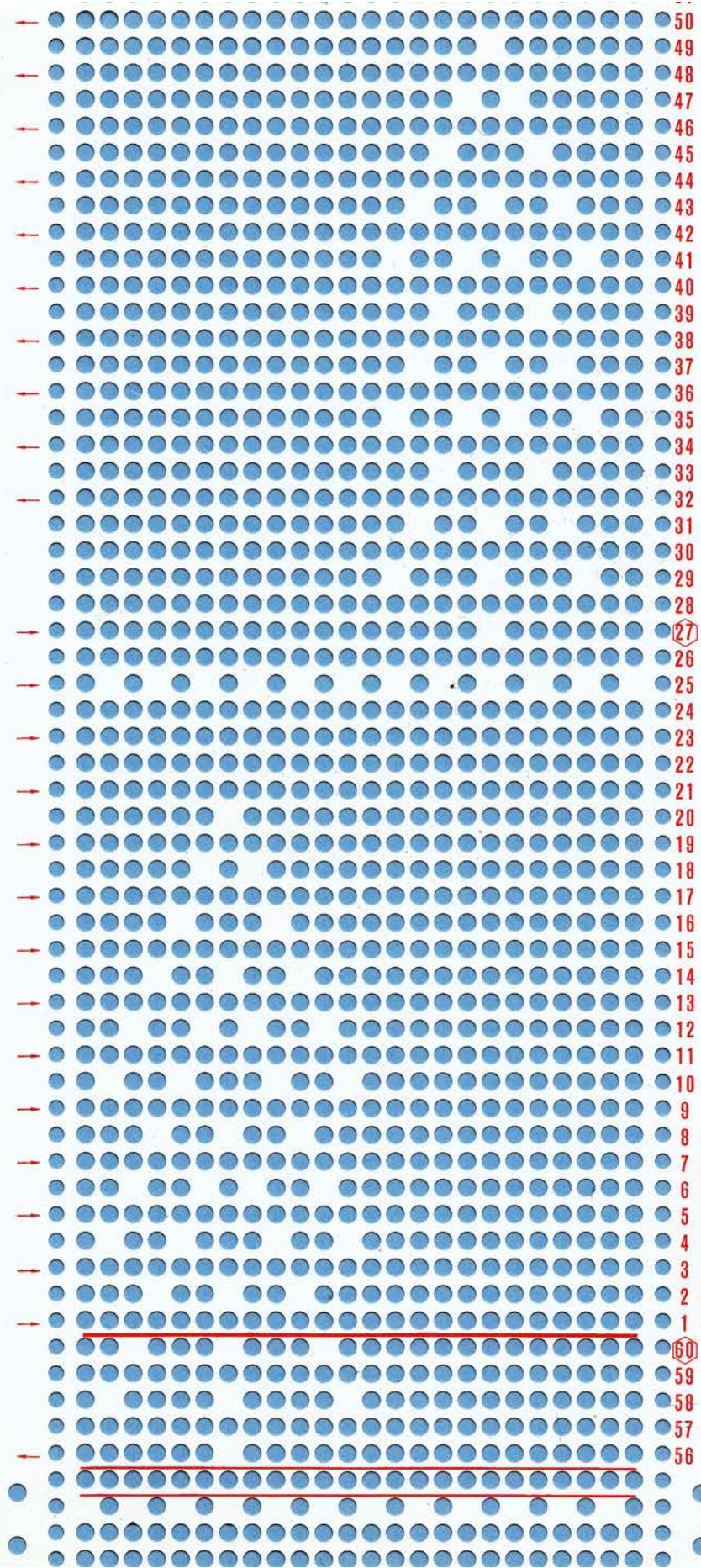


No. 18A



43
42
41
40
39
38
37
36
35
34
33
32
31
30
29
28
27
26
25
24
23
22
21
20
19
18
17
16
15
14
13
12
11
10
9
8
7
6
5
4
3
2
1
48
47
46
45
44

No. 19A



No. 20A

- 50
- 49
- 48
- 47
- 46
- 45
- 44
- 43
- 42
- 41
- 40
- 39
- 38
- 37
- 36
- 35
- 34
- 33
- 32
- 31
- 30
- 29
- 28
- 27
- 26
- 25
- 24
- 23
- 22
- 21
- 20
- 19
- 18
- 17
- 16
- 15
- 14
- 13
- 12
- 11
- 10
- 9
- 8
- 7
- 6
- 5
- 4
- 3
- 2
- 1
- 60
- 59
- 58
- 57
- 56



**PUNCH CARD
PATTERNS**

TOYOTA KS 787



ABBREVIATIONS AND NOTES

ABBREVIATIONS

Pat	Pattern
st(s)	stitch(es)
rw(s)	row(s)
MC	Main Colour
CC	Contrast Colour
MS Button(s)	Manual Selection Button(s)
Z Dial	Zigzag Dial

NOTES

Marks on the right side of Punch Cards (Details, Part I page 14)

- Change to different colour yarn.
- Shift Partial Knitting Lever to "O".
- ◇ Switch Pattern Knit Levers. Remove the lace carriage and place it onto the opposite end.

Needle position of Open Stitch Work.

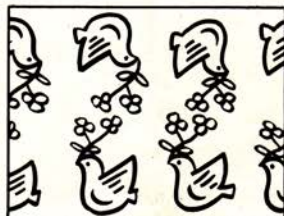
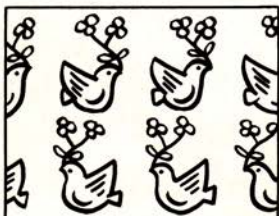


Black mark "•" presents the rivet on the needle bed.
"○" mark indicates the position of the needle from which the stitch is transferred to the next needle. For details, see page 37.

Each Punch card has the indications, A and B, on its both ends. This booklet says that side A is used for each pattern, eg. Card No. 1 - A. Give attention to this indication to knit the same pattern as in the booklet.

Punch cards can be inserted in reverse or upside down so that the actual knitted patterns appear in reverse or upside down. (See figures)

* In the former case, put the numbers and the above marks (○ □ ◇) on the right edge of the reverse of Punch card for knitting easier.

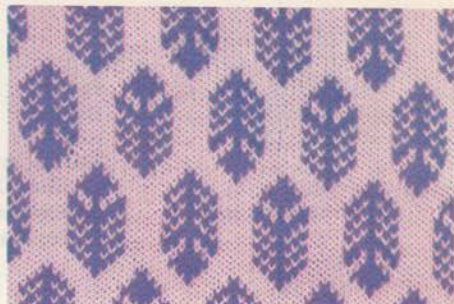


Card No. 1 — A



1 Pat — 2sts, 2rws
MC — white

Card No. 4 — A



1 Pat — 24sts, 30rws
MC — pink

Card No. 2 — A



1 Pat — 2sts, 4rws
MC — white

Card No. 5 — A



1 Pat — 24sts, 33rws
MC — dark blue

Card No. 3 — A



1 Pat — 24sts, 60rws
MC — light green

Card No. 6 — A



1 Pat — 24sts, 15rws
MC — red

Card No. 7 - A



1 Pat - 24sts, 60rws
MC - white

Card No. 10 - A



1 Pat - 24sts, 46rws
MC - orange

Card No. 8 - A



1 Pat - 24sts, 46rws
MC - white

Card No. 11 - A



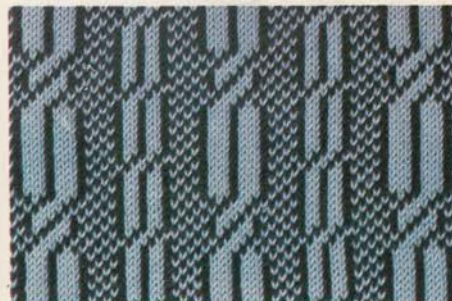
1 Pat - 24sts, 60rws
MC - white

Card No. 9 - A



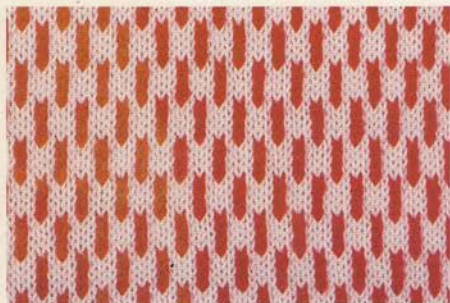
1 Pat - 24sts, 58rws
MC - white

Card No. 12 - A



1 Pat - 24sts, 20rws
MC - light blue

Card No. 13 - A



1 Pat - 4sts, 8rws
MC - pink

Card No. 16 - A



1 Pat - 12sts, 24rws
MC - white

Card No. 14 - A



1 Pat - 24sts, 48rws
MC - yellow

Card No. 17 - A



1 Pat - 24sts, 24rws
MC - white

Card No. 15 - A



1 Pat - 24sts, 58rws
MC - light green

Card No. 18 - A



1 Pat - 6sts, 16rws
MC - brown

AUTO MOTIF PATTERNS

panel and motif knitting — general instruction, page 26

Card No. 5 — A



1 Pat — 24sts, 33rws

MC — dark blue

Card No. 9 — A



1 Pat — 24sts, 58rws

MC — yellow

Card No. 6 — A



1 Pat — 24sts, 15rws

MC — red

Card No. 10 — A



1 Pat — 24sts, 46rws

MC — red

Card No. 8 — A



1 Pat — 24sts, 46rws

MC — brown

Card No. 15 — A



1 Pat — 24sts, 58rws

MC — light green

VARIATIONS OF FAIR ISLE PATTERNS

Card No. 4 - A



1 Pat - 24sts, 30rws
MC - dark blue
Change CC in every 15rws.

Card No. 10 - A (Checked border-pattern, see page 30)



1 Pat - 24sts, 46rws
1st to 10th rws MC - blue, CC - white
11th to 18th rws MC - pink, CC - white
19th to 38th rws MC - blue, CC - white
39th to 46th rws MC - blue, CC - pink

Card No. 5 - A



1 Pat - 24sts, 33rws
1st to 12th rws MC - gray, CC - white
13th to 21st rws MC - white, CC - gray
22nd to 33rd rws MC - gray, CC - white

Card No. 15 - A



1 Pat - 24sts, 58rws
CC - green
Change MC in every 10rws.

Card No. 5 - A



1 Pat - 24sts, 33rws, MC - ivory
1st to 5th rws - CC1, 6th to 10th rws - CC2
11th to 15th rws - CC3, 16th to 18th rws - CC4
19th to 23rd rws - CC3, 24th to 28th rws - CC2
29th to 33rd rws - CC1

Card No. 18 - A



1 Pat - 12sts, 24rws
MC - red
Knit 8rws, and knit 4rws with Card Feed Lever at " " mark. Repeat this procedure.

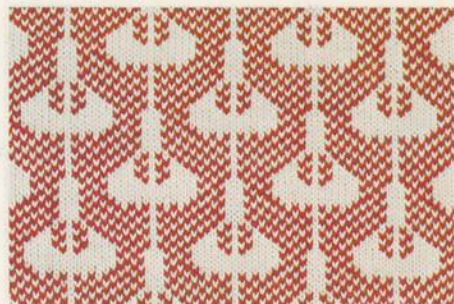
VARIATIONS OF FAIR ISLE PATTERNS
WITH MANUAL SELECTION BUTTONS & ZIGZAG DIAL

Card No. 2 - A



1 Pat - 12sts, 4rws
MC - light blue
MS Buttons - 1, 2, & 3
Z Dial - 1

Card No. 17 - A



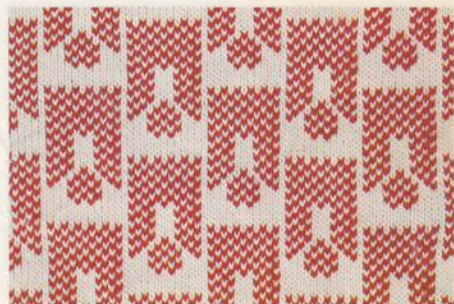
1 Pat - 24sts, 24rws
MC - brown
MS Button - 1
Z Dial - 1

Card No. 4 - A



1 Pat - 24sts, 30rws
MC - pink
MS Buttons - 1 & 7
Z Dial - 4

Card No. 17 - A



1 Pat - 24sts, 24rws
MC - red
MS Button - 7
Z Dial - 1

Card No. 8 - A



1 Pat - 24sts, 46rws MC - orange, MS Button - 1
Set Z Dial at "12", and knit turning it clockwise by one click up to "1". Turn it back to "12".
Repeat this procedure.

Your Original Pattern (See page 29)



1 Pat - 12sts, 44rws
MC - blue

Card No. 13 — A



1 Pat — 4sts, 8rws

Card No. 13 — A (See page 18)



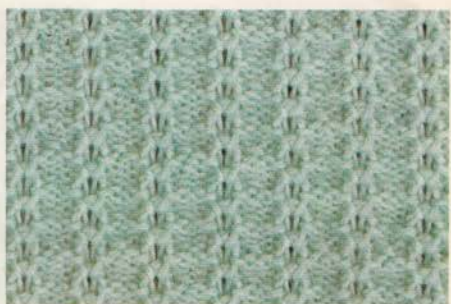
1 Pat — 4sts, 8rws
MC1 — white, MC2 — red
Change MC in every 2 rws.

Card No. 13 — A



1 Pat — 4sts, 8rws
MC1 — white, MC2 — red
Change MC in every 4rws.

Card No. 13 — A



1 Pat — 4sts, 4rws
Set Card Feed Lever at "□" mark.

Card No. 13 — A (See page 18)



1 Pat — 4sts, 24rws
MC1 — white, MC2 — green
MC3 — yellow
Change MC in every 4rws.

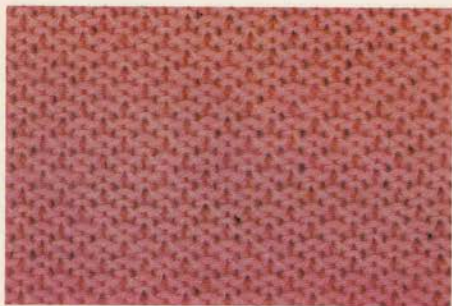
Card No. 13 — A

(Open Stitch Work, see page 37)



1 Pat — 4sts, 8rws

Card No. 2 - A



1 Pat - 2sts, 4rws
Leave right Partial Knitting Lever at "O" mark.

Card No. 18 - A



1 Pat - 6sts, 16rws
Leave right Partial Knitting Lever at "O" mark.

Card No. 14 - A



1 Pat - 24sts, 48rws

Card No. 13 - A (Auto Panel Pattern)



1 Pat - 4sts, 8rws

Card No. 15 - A



1 Pat - 24sts, 58rws
Leave right Partial Knitting Lever at "O" mark.

Card No. 15 - A (Auto Motif Pattern)



1 Pat - 24sts, 58rws
Leave right Partial Knitting Lever at "O" mark.

Card No. 1 — A



1 Pat — 2sts, 2rws

Card No. 2 — A (Use right side of knitting)



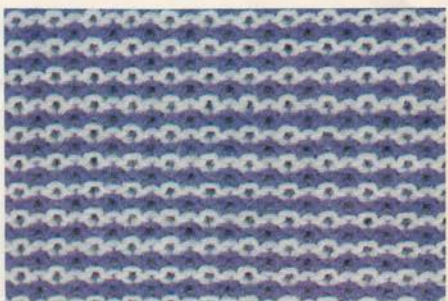
1 Pat — 2sts, 4rws
Push only left "Tuck" button.

Card No. 1 — A



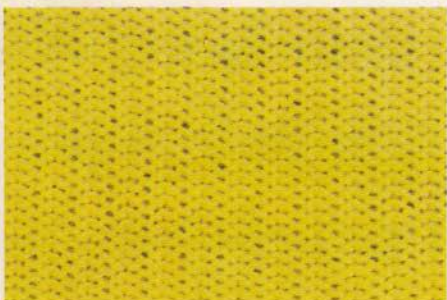
1 Pat — 2sts, 4rws
MC1 — red, MC2 — white
Change MC in every 2rws.

Card No. 2 — A



1 Pat — 2sts, 4rws
MC1 — purple, MC2 — white
Change MC in every 2rws
Push only left "Tuck" button.

Card No. 1 — A



1 Pat — 2sts, 2rws
Push only left "Tuck" button.

Card No. 2 — A (The reverse of the above knitting)



1 Pat — 2sts, 4rws

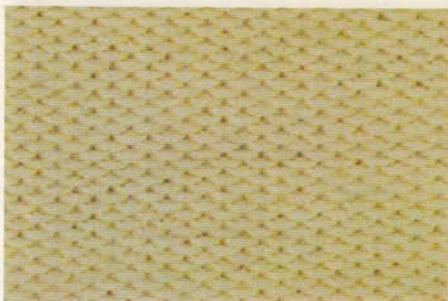
SLIP LOOP PATTERNS
— general instruction, page 20

Card No. 16 — A



1 Pat — 12sts, 24rws
Push only left "Tuck" button.

Card No. 1 — A



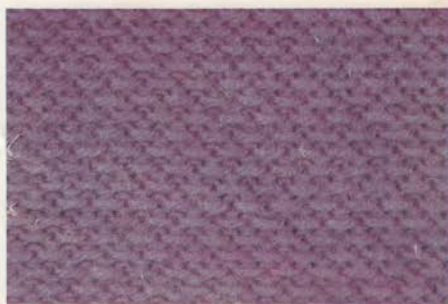
1 Pat — 2sts, 2rws

Card No. 16 — A



1 Pat — 12sts, 24rws

Card No. 2 — A



1 Pat — 2sts, 4rws

Card No. 17 — A



1 Pat — 24sts, 24rws

Card No. 16 — A

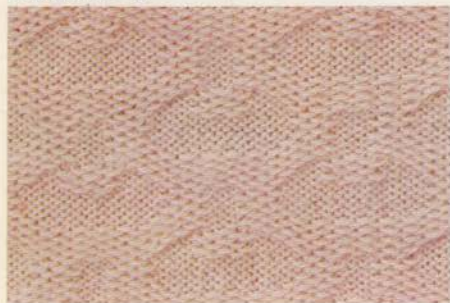


1 Pat — 12sts, 24rws

WEAVING

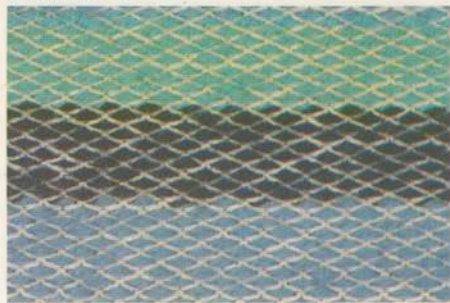
— general instruction, page 21

Card No. 17 — A



1 Pat — 24sts, 24rws

Card No. 1 — A



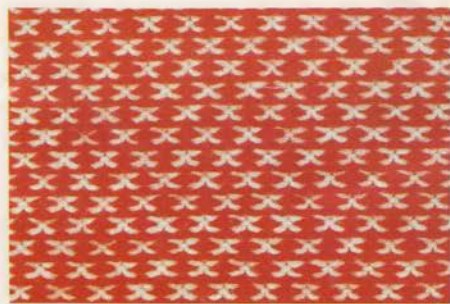
1 Pat — 2sts, 30rws
Change Weaving Yarn in every 10rws.

Card No. 18 — A



1 Pat — 6sts, 16rws

Card No. 2 — A



1 Pat — 2sts, 4rws

Card No. 11 — A



1 Pat — 24sts, 60rws

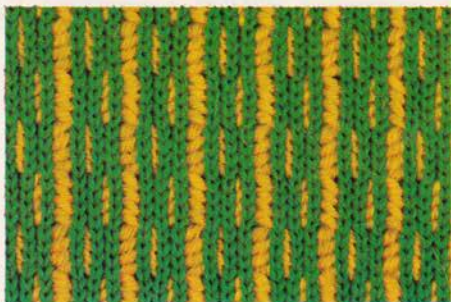


Card No. 12 - A

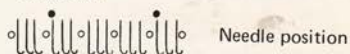


1 Pat - 24sts, 20rws

Card No. 13 - A (Open Stitch Work)



1 Pat - 4sts, 8rws



Needle position

Card No. 13 - A



1 Pat - 4sts, 8rws

Card No. 13 - A (4ply is recommended for weaving yarn.)



1 Pat - 4sts, 8rws

Hook up 4 weaving yarns crossed over 3 sts onto the center needle there of using transfer tool in every 4rws.



Card No. 13 - A (The reverse of the above knitting)



1 Pat - 4sts, 8rws

Card No. 18 - A



1 Pat - 6sts, 16rws

Card No. 2 — A



1 Pat — 2-sts, 4rws

Card No. 2 — A (Auto Panel Pattern)



1 Pat — 2sts, 4rws

Card No. 19 — A



1 Pat — 8sts, 24rws

Card No. 20 — A (Auto Motif Pattern)



1 Pat — 24sts, 60rws

Card No. 20 — A



1 Pat — 24sts, 60rws

**
** For more unique and lovely
** patterns
** There is a wide variety of
** Extra Punch Cards* for your
** further delight of knitting.
**
** More and more new and attrac-
** tive patterns will follow.
**
** * Optionally purchased
**

GUIDE TO STITCH PATTERNS

NO. OF PUCH CARD	FAIR - ISLE KNITTING	TUCK STITCH KNITTING	TUCK PATTERN KNITTING	SLIP LOOP KNITTING	WEAVING	LACE KNITTING
1	○		○	○	○	○
2	○	○	○	○	○	○
3	○					
4	○					
5	☆					
6	☆					
7	○					
8	☆					
9	☆					
10	☆					
11	○				○	
12	○				○	
13	○	○			○	
14	○	○				
15	☆	☆				
16	○	○	○	○		
17	○		○	○		
18	○	○		○	○	
19						○
20						☆

“☆ marks” suitable for Auto Motif Knitting.

