

INTERNATIONAL
KNITWEAR
COLLECTION

EMPISAL

BOOK AU32



EMPISAL

INTERNATIONAL KNITWEAR COLLECTION

Empisal are pleased to present their International Fashion Co-ordinator's selection of the following PATONS twelve machine knitted garments.

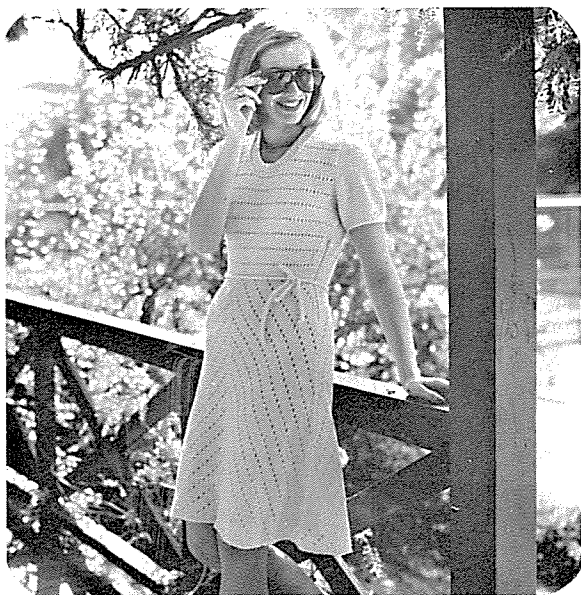
*AN EMPISAL PUBLICATION: WORLD COPYRIGHT BY EMPISAL INTERNATIONAL

contents

PAGE 1	LADY'S DRESS (THE COOL LOOK)	AU 32-1
PAGE 2	CHILD'S FAIRISLE TRIM FROCK	AU 32-2
PAGE 4	MAN'S CABLE TRIM SHIRT	AU 32-3
PAGE 5	LADY'S LACE BLOUSE	AU 32-4
PAGE 8	LADY'S BEACH COAT	AU 32-5
PAGE 12	LADY'S BIKINI	AU 32-6
PAGE 12	LADY'S JACKET SUIT	AU 32-7
PAGE 16	BOY'S STRIPED JUMPER	AU 32-8
PAGE 17	BOY'S PATTERNED SHIRT	AU 32-9
PAGE 19	LADY/GIRL SKIRT AND TOP	AU 32-10
PAGE 20	LADY'S HALTER NECK PATIO DRESS	AU 32-11
PAGE 21	MAN'S COTTON JUMPER	AU 32-12

LADY'S DRESS (The Cool Look)

Pattern AU 32-1



MATERIALS: 11(12-13-14-15) 50g balls of PATON'S Touch of Ice. 20cm (8ins) Zipper.

MEASUREMENTS: Fits bust 85(90-95-100-105)cm, 33½[35½-37½-39¼-41¼] ins. Waist 65(70-75-80-85)cm, 25½[27½-29½-31½-33½] ins. Hip 90(95-100-105-110)cm, 35½[37½-39¼-41¼-43¼] ins. Measures (approx.) bust 85(90-95-100-105)cm, 33½[35½-37½-39¼-41¼] ins. Waist 65(70-75-80-85)cm, 25½[27½-29½-31½-33½] ins. Hip 95(100-105-110-115)cm, 37½[39¼-41¼-43¼-45¼] ins. Length 95(96-96-97-97)cm, 37½ [37¼-37¼-38¼-38¼] ins. Sleeve Seam 7cm, [2¾ins] all sizes.

TENSION: T8 = 26½sts and 36 rows to 10cm (approx 4ins) over st st. (Please Check).

PATTERN 1.

1. Press buttons 1, 3, 5 and 7. Set lever. Move LC from L to R.
 2. Knit 12 rows.
- Repeat.

PATTERN 2.

1. S/D on 1. Press button 1. Set lever. Move LC from L to R. Knit 4 rows.
- Rep. step 1, having S/D on 3, 5 and 7.
- Repeat.

PATTERN 3.

1. S/D on 7. Press button 1, set lever. Move LC from R to L. Knit 4 rows.
- Rep. Step 1, having S/D on 5, 3 and 1.

TOP.

BACK: R/C 0. Cast on 89(93-99-103-109)sts for selvedge edge. T8 Knit 12 rows inc at ea end of 5th row and foll 4th row, Work in patt 1, inc at ea end of next row and foll 4th rows 4 times more – 103(107-113-117-123)sts, then in foll 6th rows 6 times – 115(119-125-129-135)sts. Work 5 rows. R/C reads 70. **SHAPE ARMHOLES:** R/C 0. Cast off 7(8-9-10-11)sts at beg of next 2 rows. Dec at ea end of next and foll alt rows 8(8-9-9-10) times in all – 85(87-89-91-93)sts. ** Cont in patt until R/C reads 68(72-72-76-76). **SHAPE SHOULDERS:** Cast off 9sts at beg of next 6 rows. Take rem 31(33-35-37-39)sts off on waste yarn.

FRONT: Work as for Back to **. Work 1 row. R/C reads 18(18-20-20-22). **SHAPE NECK:** Knit 50(51-53-54-56)sts at opp end to carr off manually on to waste yarn and push needles into "A" pos. Work 2 rows. Dec at neck edge in next and foll alt rows 5 times in all – 30(31-31-32-32)sts, then in foll 4th rows 3(4-4-5-5) times – 27sts. Work in patt until R/C reads 68(72-72-76-76). **SHAPE SHOULDER:** Cast off 9sts at beg of next row and foll alt row. Work 1 row. Cast off rem sts. Bring rem sts from "A" back into "B" pos. Knit centre 15(15-17-17-19)sts off on waste yarn. R/C 18(20-20-22-22). Join yarn to rem sts and work other side to correspond.

SLEEVES: T0 Cast on 87(89-91-93-95)sts for 1 x 1 rib. T4 rib 8 rows. Transfer sts to Main Bed. R/C 0 T8 knit 16 rows. **SHAPE TOP:** R/C 0 Cast off 4(4-5-5-6)sts at beg of next 2 rows. Dec at ea end of next and foll alt rows 24(25-25-26-26) times in all – 31sts, then at ea end of every row 5 times. R/C reads 54(56-56-58-58). Cast off rem 21sts.

NECKBAND: Join right shoulder seam. Wrong side facing, pick up 133(137-143-147-153)sts evenly around neck (incl sts from waste yarn). T8, knit 1 row. Arrange sts for 1 x 1 rib. T4 rib 8 rows. Cast off.

SKIRT.

RIGHT FRONT: Carr on R cast on 51(55-59-61-65)sts for selvedge edge. 23sts to L of 0 28(32-36-38-42)sts to R of 0. Knit 1 row. Working in patt 3 cast on 10(10-10-12-12)sts at beg of next and foll alt rows 3

times in all — 81(85-89-97-101)sts. R/C 0. Cont in patt 3, dec at beg of 14th row and foll 8th rows 8 times — 72(76-80-88-92)sts, then at beg of foll 4th rows 29 times. Work 10 rows. R/C reads 204. Cast off rem 43(47-51-59-63)sts.

LEFT FRONT: Cast on 51(55-59-61-65)sts for selvedge edge. 21(25-29-31-35)sts to L of 0. 30sts to R of 0. Complete as for R. Front, working Patt 2 instead of Patt 3.

LEFT BACK: Work as for R. Front.

RIGHT BACK: Work as for L Front.

BELT: Cast on 5sts for selvedge edge. T4, knit a 138 cm (54in) length of tubular knitting. (Right part button in). Cast off.

TO MAKE UP: Press lightly. Join left shoulder, side and sleeve seams of top, leaving left side seam open for 10cm (4ins). Join skirt sections, leaving 10cm (4in) opening in left side. Join skirt to bodice. Sew in zip. Press seams. Tie a knot at each end of belt.

CHILD'S FAIRISLE TRIM FROCK Pattern AU 32-2



MATERIALS: 5(5-6-6) 25g balls of PATON'S Azalea in Main Colour (MC), 2(2-2-2) 25g balls in Contrast Colour (CC). 4 Small Buttons. 3.00 (No. 10-11) Crochet Hook.

MEASUREMENTS: Fits chest 50(55-60-65)cm, 19½[21¾-23½-25½] ins. Measures 52(57-62-67)cm, 20½[22½-24½-26½] ins. Length 40(45-49-53)cm, 15¾[17¾-19¾-20¾] ins. Sleeve Seam 5(5-6-6)cm, 2[2-2 3/8-2 3/8] ins.

TENSION: T5 = 31sts and 48 rows to 10cm (approx 4ins) over st st. (Please Check).

PATTERN.

Set Machine for Fair Isle. Reverse switch —

1. Press buttons 4 and 5. (Set lever. Knit 1 row Fair Isle) twice.

2. Buttons 2, 3, 6 and 7. (Set. Knit 1 row Fair Isle) twice.

3. Buttons 1 and 8. (Set. Knit 1 row Fair Isle) twice.

4. As 2.

5. As 1.

BACK: Carr on R. T4 Cast on 125(133-141-149)sts in waste yarn 62(62-70-70)sts to L of 0. 63(71-71-79) sts to R of 0. Knit 6 rows. Using MC knit 13 rows. Press buttons 1, 3, 5 and 7. Set lever. Move LC from L to R. T5. Knit 14 rows. T6. Close hem. T5 Using CC Knit 4 rows. Using MC Knit 6 rows. Using CC Knit 4 rows. Using MC Cam on 1 (KH 600-610-680) on II(KH 91). * Push 6(7-7-7)sts at opp end to carr into "E" pos. Knit 1 row. Wind yarn around first "E" pos needle. * Rep. from * to * 9 times. (Push "E" pos needles at opp end to carr into "C" pos. Knit 1 row) twice. R/C 0 Cam on 3 (KH 600-610-680) in I(KH 91). Dec (inside 3sts) at ea end of next and foll 4th(6th-6th-6th) rows 22(13-14-20) times in all, B, C and D only, then in foll 4th rows (9-8-2) times. 81(89-97-105)sts. Knit 3(3-5-5) rows, setting machine for Fair Isle in last row. Using MC in carr and CC as laying in thread, T6 work step 1 of patt. (Press buttons 2, 3, 4, 5, 6, 7, set lever, knit 1 row Fair Isle) twice. T5 Using CC, knit 2 rows. R/C reads 94 (118-122-134). SHAPE ARMHOLES: R/C 0. T5. Using CC cast off 4(4-5-5)sts at beg of next 2 rows. Dec at ea end of next row. Work 1 row, setting machine for Fair Isle. T6. Work steps 1 to 5 incl Fair Isle patt dec at ea end of next an foll alt rows 3(4-4-5) times in all — 65(71-77-83)sts. ** T5. Using CC knit until R/C reads 46(52-58-66). SHAPE SHOULDERS: Cast off 10(11-12-13)sts at beg of next 4 rows. Take rem 25(27-29-31)sts off on waste yarn.

FRONT: Work as for Back to **. T5. Using CC knit until R/C reads 14(18-24-30). SHAPE NECK: Knit 39(42-45-49)sts at opp end to carr off manually on to



Pattern AU 32-2

waste yarn and push needles into "A" pos. Knit 2 rows. Dec at neck edge in next and foll alt rows 3(4-3-3) times in all, then in foll 4th rows 3(3-5-5) times. 20(22-24-26)sts. Knit until R/C reads 46(52-58-66). **SHAPE SHOULDER:** Cast off 10(11-12-13)sts at beg of next row. Work 1 row. Cast off rem sts. Bring rem needles back into "B" pos. Knit centre 13(13-13-15)sts off on waste yarn. Join yarn to rem sts and work other side to correspond.

SLEEVES: Using MC cast on 75(87-95-101)sts for selvedge edge. T5. R/C 0. Knit 18(18-24-24) rows. **SHAPE TOP:** R/C 0. Cast off 2(2-3-3)sts at beg of next 2 rows. Dec at ea end of next and foll alt rows 7(7-6-7) times in all — 57(69-77-81)sts, then at ea end of every row 19(25-29-31) times. Cast off rem 19sts.

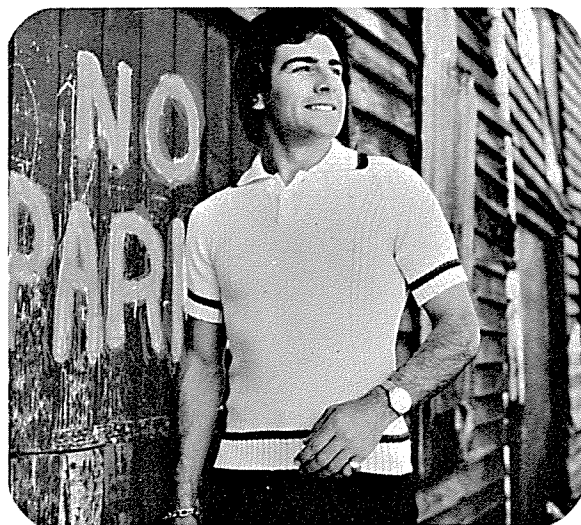
SLEEVE BAND: Bring 51(63-71-77)sts on Main Bed into "B" pos. Wrong side facing. Replace sts from waste yarn, dec 24sts evenly across row. T5. Knit 1 row. Arrange sts for 1 x 1 rib. T2 rib 9 rows. Cast off.

NECKBAND: Join right shoulder seam. Wrong side facing pick up 95(101-109-117)sts evenly around neck (incl sts from waste yarn). T5. Using CC Knit 1 row. Transfer sts for 1 x 1 rib. T2 rib 8 rows. Cast off.

TO MAKE UP: Press lightly. Join left shoulder seam at armhole edge for 1cm (1/8in). Join side and sleeve seams. Sew in sleeves. Work 2 rows of dc along left shoulder opening working four 3 ch button loops evenly along front edge in 2nd row. Sew on buttons. Press seams.

MAN'S CABLE TRIM SHIRT

Pattern AU 32-3



MATERIALS: 9(9-10-11-12) 25g balls of PATON'S Azalea in Main Colour (MC), 1(1-1-1-1) 25g balls in 1st Contrast Colour (CC1), 1(1-1-1-1) 25g balls in 2nd Contrast Colour (CC2). 3 Small Buttons.

MEASUREMENTS: Fits chest 90(95-100-105-110) cm, 35½[37½-39¼-41¼-43¼] ins. Measures 90(95-100-105-110)cm, 35½[37½-39¼[41¼-43¼] ins. Length 59(59-60-60-61)cm, 23¼[23¼-23½-23½-24] ins. Sleeve Seam 11(11-12-12-13)cm, 4 3/8[4 3/8-4¾-4¾-5 1/8] ins.

TENSION: T5 = 31sts and 48 rows to 10cm (approx 4ins) over stocking st. (Please Check).

PATTERN.

* On ea group of 4sts between "A" pos needles work cable patt as follows — (counting from R "A" pos needle) Using two 2 eye transfer tools move 3rd and 4th sts on to 1st and 2nd needles, then 1st and 2nd sts on to 3rd and 4th needles. Knit 12 rows. Rep from * to * throughout.

BACK: T0 Using MC cast on 146(154-162-170-178) sts fro 2 x 2 rib. T2 Using MC rib 28 rows. Using CC1 rib 4 rows. Using CC2 rib 4 rows. Transfer sts to Main Bed. Transfer 27th, 31st, 36th and 40th sts from ea end of work on to adjacent needles. Push empty needles into "A" pos. T5 Using MC R/C 0 K 12 rows. Work cable patt until R/C reads 156. **SHAPE RAGLAN.** R/C 0. Cast off 4sts at beg of next 2 rows. Dec at ea end of next row. **A and B only — dec in foll 4th rows 4(1) time/s — 128(142)sts. All Sizes — Dec at ea end of foll alt rows 44(50-54-51-50) times — 40(42-44-58-68)sts.

D and E only — then in every row (6-10) times — (46-48)sts. All Sizes — Work 1 row. Cast off rem sts.

FRONT: Work as for Back to **. A and B only — Dec at ea end of foll 4th rows 4(1) time/s. 128(142) sts. All Sizes — Dec in foll alt rows 0(6-9-9-10) times — 128(130-134-142-148)sts. Work 1 row. Divide for Front Opening — Knit 70(71-73-77-80)sts at opp end to carr off manually on to waste yarn. Push needles into "A" pos. Dec at armhole edge in next and foll alt rows 27(27-28-28-28) times in all — 31(32-33-37-40)sts. **SHAPE NECK:** Cast off 3(3-4-4-5)sts at beg of next row. Dec at armhole edge in next and foll alt rows 17(17-17-14-12) times in all AT THE SAME TIME dec at neck edge in 3rd and alt rows 5(7-8-9-11) times in all, then in foll 4th rows 4(3-2-2-0)

times. D and E only — Dec at armhole edge in every row (6-10) times — All sizes — 2sts. Work 2 tog. Fasten off. Bring rem sts back into "B" pos. Cast off 12sts at centre front and work other side to correspond.

SLEEVES: T0. Using MC cast on 118(122-126-130-134)sts for 2 x 2 rib. T3 Using MC rib 28 rows. Using CC1 rib 4 rows. Using CC2 rib 4 rows. Transfer sts to Main Bed. R/C 0. T5 Using MC knit until R/C reads 30. **SHAPE TOP:** R/C 0. Cast off 4sts at beg of next 2 rows. Dec at ea end of next row, A, B and C only — then in foll 4th rows 3(1-1)time/s — 102(110-114)sts. All Sizes — Dec at ea end of foll alt rows 46(50-52-53-55) times, D and E only, then in every row twice. All Sizes — Work 1 row. Cast off rem 10sts.

LEFT FRONT NECK BAND: T0 Using MC cast on 15sts for 1 x 1 rib. Inc at ea end of Main Bed after selvedge (17sts). T2 rib 4 rows. Make a buttonhole in next row by moving 8th and 9th sts to adj needles. Make a buttonhole in this manner in foll 14th rows twice. R/C reads 32. Rib 4 rows. Cast off.

RIGHT FRONT BAND: Work as for Left Front Band omitting buttonholes.

COLLAR: T0 Using CC1 cast on 153(157-163-167-171)sts for 1 x 1 rib. T2 rib 4 rows. Using CC2 rib 4 rows. Using MC rib 40 rows. Cast off 13(13-14-14-15) sts at beg of next 8 rows. Cast off rem sts.

TO MAKE UP: Join raglan, side and sleeve seams. Sew on front bands and collar. Sew on buttons. Press seams.

LADY'S LACE BLOUSE

Pattern AU 32-4



MATERIALS: 11(12-13-14-15) 25g balls of PATON'S Azalea. 8 Small Buttons. 3.00 (No. 10-11) Crochet Hook.

MEASUREMENTS: Fits bust 80(85-90-95-100)cm, 31½[33½-35½-37½-39½] ins. Measures 78(83-88-93-98)cm, 30¾[32¾-34¾-36¾-38½] ins. Length 53(53-54-54-55)cm, 20¾[20¾-21¼-21¾] ins. Sleeve Seam 12cm, [4¾ins] all sizes.

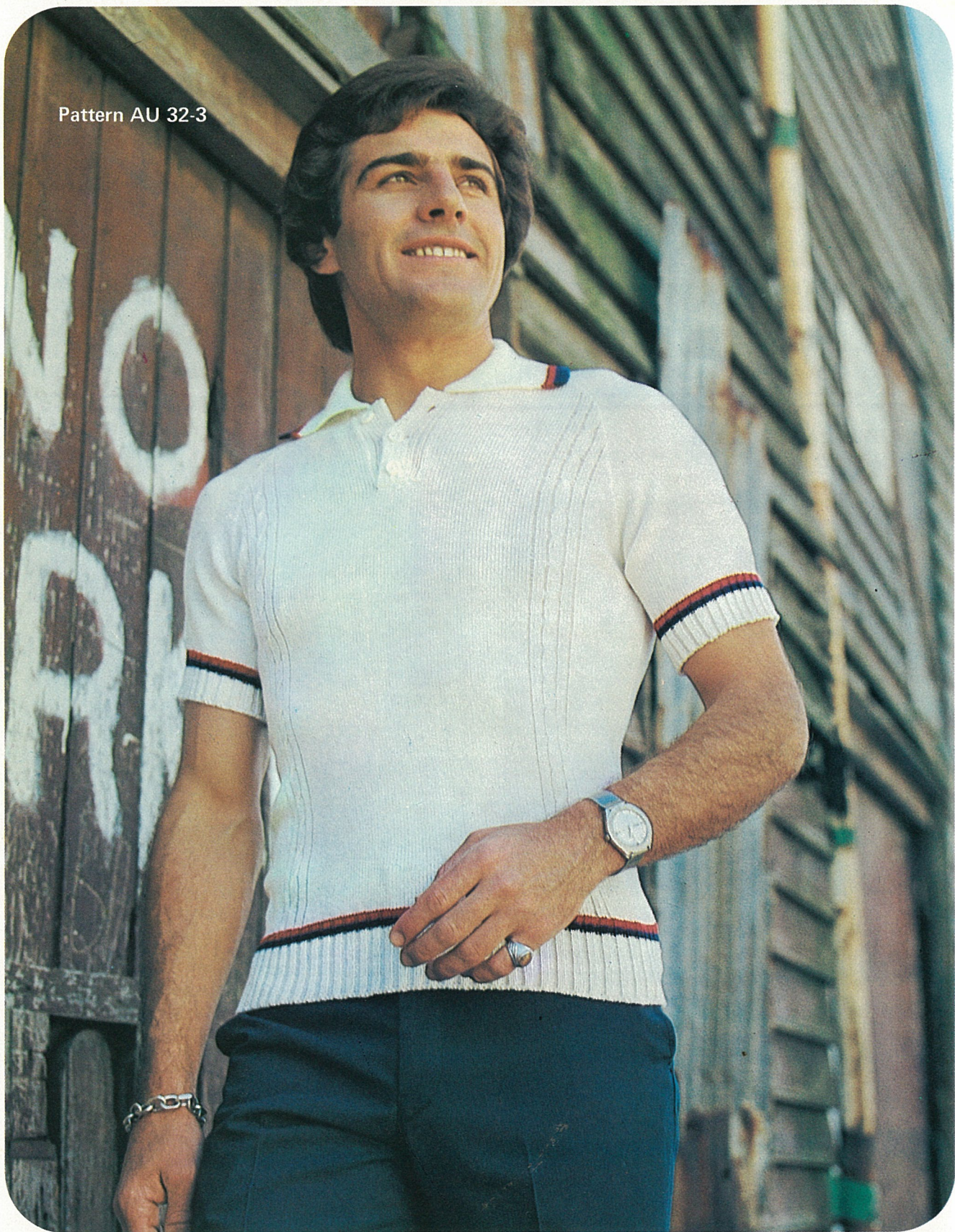
TENSION: T5 = 31sts and 48 rows to 10cm (approx 4ins) over stocking st. (Please Check).

PATTERN.

1. Press buttons 1 and 5. Set lever. Move LC from L to R. Knit 2 rows.
 2. Button 6. Set. Move LC from L to R.
 3. Button 4. Set. Move LC from R to L. Knit 2 rows.
 4. Button 7. Set. Move LC from L to R.
 5. Button 3. Set. Move LC from R to L. Knit 2 rows.
 6. Button 8. Set. Move LC from L to R.
 7. Button 2. Set. Move LC from R to L. Knit 2 rows.
 8. As 1.
 9. Button 2. Set. Move LC from L to R.
 10. Button 8. Set. Move LC from R to L. Knit 2 rows.
 11. Button 3. Set. Move LC from L to R.
 12. Button 7. Set. Move LC from R to L. Knit 2 rows.
 13. Button 4. Set. Move LC from L to R.
 14. Button 6. Set. Move LC from R to L. Knit 2 rows.
- Repeat.

BACK: Carr on L. T6. Cast on 121(129-137-145-153) sts in waste yarn (odd st. on R). Knit 6 rows. T4 Using Main yarn knit 10 rows. Press buttons 1, 3, 5 and 7. Set lever. Move LC from L to R. T5 Knit 11 rows. T6. Close Hem. *RCO T4. Work steps 1 to 14 incl. of patt. then step 1. * T5. Knit 28 rows st st **. Rep from first * to ** twice, then * to * once. R/C reads 156. **SHAPE ARMHOLES:** R/C 0. T5. Working in st st, cast off 6(7-8-10-11)sts. at beg of next 2 rows. *** Dec at ea end of next and foll alt rows 7(8-9-10-11) times in all — 95(99-103-105-109)sts. Knit

Pattern AU 32-3



Pattern AU 32-4



until R/C reads 92(96-96-100-100). **SHAPE SHOULDERS:** Cast off 10(11-11-11-11)sts at beg of next 4 rows, then 11(10-11-11-12)sts at beg of foll 2 rows. Cast off rem sts.

FRONT: Work as for Back to ***. **DIVIDE FOR FRONT.** Knit 55(58-61-63-66)sts at opp end to carr off manually on to waste yarn and push needles into "A" pos. Counting from Centre front, place 4th, 7th, 10th and 13th sts on to 5th, 8th, 11th and 14th needles. Leave empty needles in "B" pos. Dec at beg of next row. Knit 1 row. Counting from centre front place 4th, 7th, 10th and 13th sts on to 3rd, 6th, 9th and 12th needles. Leave empty needles in "B" pos. Dec at beg of next row. Knit 1 row. Working eyelet patt as in last 4 rows, dec at armhole edge in next and foll alt rows 5(6-7-8-9) times in all — 47(49-51-52-54) sts. Work until R/C reads 59(61-61-63-63). **SHAPE NECK:** Cast off 8(9-9-10-10)sts at beg of next row. Work 2 rows. Dec at neck edge in next and foll alt rows 6(5-7-6-8) times in all, then in foll 4th rows 2(3-2-3-2) times. 31(32-33-33-34)sts. Work until R/C reads 92(96-96-100-100). **SHAPE SHOULDER:** Cast off 10(11-11-11-11)sts at beg of next row and foll alt row. Work 1 row. Cast off rem 11(10-11-11-12)sts. Bring rem needles back into "B" pos. Join yarn to rem sts and work other side to correspond, working a dec at centre front in 1st row.

SLEEVES: T4 Cast on 105(113-121-129-137)sts for selvedge edge (odd st on R). R/C 0 work in patt until R/C reads 48. **SHAPE TOP:** R/C 0 Cont in patt. Cast off 3(4-4-5-6)sts at beg of next 2 rows. Dec at ea end of next row, A, B, C and D only, then in foll 4th rows 9(8-4-3) times. 79(87-103-111)sts. **ALL SIZES:** Dec at ea end of foll alt rows 26(30-38-42-48) times. Work 1 row. R/C reads 92(96-96-100-100). Cast off rem 27sts.

NECKBAND: T4. Cast on 105(109-113-117-121)sts for selvedge edge (odd st on R) ** Knit 4 rows. Work steps 1 to 14 incl of patt, then step 1. T5 knit 4 rows st st. Press buttons 1, 3, 5 and 7. Set lever. Move LC from L to R, knit 1 row T4 Knit 21 rows. Cast off.**

SLEEVES BANDS: T4. Cast on 65(69-71-73-77)sts for selvedge edge (odd st on R). Work as for Neckband from ** to **.

TO MAKE UP: Join shoulder and side seams. Sew lower edge of sleeve to cast on edge of cuff, easing sleeve to fit. Join sleeve seams. Sew in sleeves, gathering head of sleeve to fit armhole. Sew cast on edge of neckband to neck edge. Fold edge of neckband and cuff in half along picot edge and stitch in pos. Work 2 rows of dc evenly around front opening, working 2 buttonloops on neckband and 6 button loops evenly along right front edge in 2nd row. Sew on buttons. Press seams.

LADY'S BEACH COAT

Pattern AU 32-5



MATERIALS: 10(11-12-13-14) 50g balls of PATON'S Gem.

MEASUREMENTS: Fits bust 80(85-90-95-100)cm 31½[33½-35½-37½-39¼] ins. Measures 84(89-94-99-104)cm, 33[35-37-39-41] ins. Length 67(67-68-68-69)cm, 26¼[26¼-26½-26½-27] ins. Sleeve Seam 36(36-36-36-36)cm, 14[14-14-14-14] ins.

TENSION: T6.2 = 30sts and 38 rows to 10cm (approx 4ins) over st st. (Please Check).

PATTERN 1.

1. Press buttons 1, 3, 5 and 7. Set lever. Move LC from L to R. Knit 4 rows.
2. Buttons 1, 3, 5 and 7. Set. Move LC from R to L. Knit 4 rows.
3. As 1.
4. As 2.
5. Button 5. Set. Move LC from L to R. Knit 2 rows.
6. Button 6. Set. Move LC from L to R.
7. Button 2. Set. Move LC from R to L. Knit 2 rows.

8. Button 7. Set. Move LC from L to R.
9. Button 3. Set. Move LC from R to L. Knit 2 rows.
10. Button 8. Set. Move LC from L to R.
11. Button 2. Set. Move LC from R to L. Knit 2 rows.
12. Button 1. Set. Move LC from L to R. Knit 4 rows. Rep steps 1 to 4 incl.

PATTERN 2.

Work steps 5 to 11 incl as for Patt 1.

12. Button 1. Set. Move LC from L to R. Knit 2 rows.
13. Button 2. Set. Move LC from L to R.
14. Button 8. Set. Move LC from R to L. Knit 2 rows.
15. Button 3. Set. Move LC from L to R.
16. Button 7. Set. Move LC from R to L. Knit 2 rows.
17. Button 4. Set. Move LC from L to R.
18. Button 6. Set. Move LC from R to L. Knit 2 rows.
19. Button 5. Set. Move LC from L to R. Knit 4 rows.

BACK: T6.2. Cast on 161(169-177-185-193)sts for selvedge edge (odd st on R). R/C 0 Knit 52 rows st st, dec at each end of 11th and foll 10th rows 5 times in all — 151(159-167-175-183)sts. T5.2. Work Patt 1 dec at ea end of 10th row from prev dec and foll 10th rows, 3 times. 143(151-159-167-175)sts. T6.2. Knit 52 rows st st dec at each end of 10th row from prev dec, then in foll 10th rows 4 times, 133(141-149-157-165)sts. T5.2. Work Patt. 1, dec at each end of 10th row from prev dec, then in foll 10th rows 3 times, 125(133-141-149-157)sts. R/C reads 192. **SHAPE ARMHOLES:** R/C 0. T6.2. Cast off 8(9-10-12-13)sts at beg of next 2 rows. Cont in st st, dec at each end of next and foll alt rows 8(10-11-12-13) times in all — 93(95-99-101-105)sts. Knit 5 rows. Inc. at ea end of next and foll 6th rows 7 times in all — 107(109-113-115-119)sts. Knit until R/C reads 70 (70-74-74-78). **SHAPE SHOULDERS:** Cast off 6sts at beg of next 10 rows, then 7sts at beg of foll 2 rows. Cast off rem sts.

LEFT FRONT: T6.2. Carr on L. Cast on 81(85-89-93-97)sts for selvedge edge, 40sts to L of 0, 41(45-59-53-57)sts to R of 0. Work in patt and tension as given for Back, dec at beg of 11th and foll 10th rows 18 times in all — 63(67-71-75-79)sts. **SHAPE ARMHOLE:** T6.2. Cast off 8(9-10-12-13)sts at beg of next row. Knit 1 row. Dec at armhole edge in next and foll alt rows 8(10-11-12-13) times in all — 47(48-

50-51-53)sts. Knit 5 rows. Inc at armhole edge in next and foll 6th rows 6(5-5-5-5) times in all — 53(53-55-56-58)sts. Knit 0(2-2-0-2) rows. **SHAPE NECK:** Cast off 9(10-11-12-14)sts at beg of next row. Dec at neck edge in next and foll alt rows 8(8-9-9-9) times in all, **AT THE SAME TIME** inc at armhole edge in 6th row from prev inc B, C, D and E only, then in foll 6th row once. All sizes, 37sts. Knit until R/C reads 70(74-74-78-78). **SHAPE SHOULDER:** Cast off 6sts at beg of next and foll alt rows 5 times in all. Work 1 row. Cast off rem 7sts.

RIGHT FRONT: T6.2. Cast on 81(85-89-93-97)sts for selvedge edge, 41sts to R of 0, 40(44-48-52-56)sts to L of 0. Work to correspond with Left Front, reversing all shapings.

SLEEVES: Cast on 113(115-119-121-125)sts for selvedge edge. T6.2 Knit 1 row. R/O 0. T5.2. Work Patt 2, dec at each end of 5th row. Working Steps 1 to 12 incl of Patt 1 throughout, dec at each end of 5th and foll 20th rows 6 times in all, 99(101-105-107-111)sts. Work until R/C reads 132. **SHAPE TOP:** Cast off 5(5-5-6-6-6)sts at beg of foll 8th rows, then 6sts at beg of foll 6 rows. Cast off rem sts.

NECKBAND: Join shoulder seams. Wrong side facing, pick up 91(93-97-99-103)sts evenly around neck. T5.2 Knit 10 rows, inc at each end of alt rows 5 times. Press buttons 1, 3, 5 and 7. Move LC from L to R. Knit 1 row. T4.2. Knit 10 rows, dec at each end of next and foll alt rows 5 times in all. Knit 1 row. Cast off loosely.

POCKETS: T6.2. Cast on 41sts for selvedge edge. Knit 12 rows st st. T5.2. Work Patt 2. T6.2. Knit 12 rows. Press buttons 1, 3, 5 and 7. Set lever. Move LC from L to R. T5.2. Knit 8 rows st st. Cast off loosely.

FRONT BANDS: Wrong side facing pick up 103(105-105-109-109)sts. Work as for Neckband.

LOWER BANDS (2): Join side seams. Wrong side facing, commencing at centre back, pick up 160sts evenly along lower edge, inc at centre back for seam. Work as for Neckband, working inc at front edge only.

SLEEVE BANDS: Wrong side facing, pick up 113 (115-119-121-125)sts along lower edge of sleeve. Work as for Neckband, omitting inc.

TO MAKE UP: Press lightly. Join sleeve seams. Sew in sleeves. Join mitred corners of bands. Fold bands in half on to wrong side of work and sew in position. Sew on pockets as illustrated. Press seams.

Pattern AU 32-5

Pattern AU 32-6



Pattern AU 32-7



LADY'S BIKINI
Pattern AU 32-6



MATERIALS: 2(2-2-2) 50g balls of PATON'S Gem in Main Colour (MC), 1(1-1-1) 50g balls in Contrast Colour (CC). Length of Hat Elastic. 3.00 (No.10-11) Crochet Hook.

MEASUREMENTS: Fits bust 80(85-90-95)cm, 31½ [33½-35½-37½] ins. Measures 80(95-90-95)cm, 31½ [33½-35½-37½] ins. Fits Hip 85(90-95-100)cm, 33½ [35½-37½-39¼] ins. Measures 85(90-95-100)cm, 33½ [35½-37½-39¼] ins.

LADY'S JACKET SUIT
Pattern AU 32-7

MATERIALS: (For Jacket) 5(6-7-8-9) 50g balls of PATON'S Gem. (For Skirt) 8(9-10-11-12) 50g balls. 7 Buttons. Length of 2cm (¾in) Elastic for waist of skirt. 3.00 (No. 10-11) Crochet Hook.

MEASUREMENTS: Jacket fits bust 85(90-95-100-105)cm, 33½ [35½-37½-39¼-41¼] ins. Measures 87 (92-97-102-107)cm, 34¼ [36¼-38¼-40¼-42] ins. Length 49(50-50-51-51)cm, 19¼ [19¼-19¼-20-20] ins. Skirt fits waist 65(70-75-80-85)cm, 25½ [27½-29½-31½-33½] ins. Hip 90(95-100-105-110)cm, 35½ [37½-39¼-41¼-43¼] ins.

TENSION: T5.2 = 27sts and 44 rows to 10cm (approx 4ins) over patt. T6.2 = 30sts and 38 rows to 10cm (approx 4ins) over st st. (Please Check).

TENSION: T6.2 = 30sts and 38 rows to 10cm (approx 4 ins.) over stocking st. (Please Check).

TOP: Carr on R using MC cast on 40(44-48-52)sts for selvedge edge. T6.2 knit 6 rows. Using CC knit 4 rows. Using MC knit 18(20-22-24) rows. Cast off 22 (24-26-28)sts on right side. Knit 22(24-26-28) rows. Cast off. Carr on L Knit other side to correspond.

PANTS.

BACK: Using MC cast on 114(120-126-132)sts for selvedge edge. Knit 6 rows. Using CC knit 4 rows. Using MC knit 2 rows. ** Dec at ea end of next and foll 4th rows 5 times in all. 104(110-116-122)sts. Dec at ea end of foll alt rows 9 times. 86(92-98-104) sts, then at ea end of every row 33(36-39-42) times. Knit 4(4-6-6) rows. Cast off rem 20sts.

FRONT: Work as for Back to **. Cast off 22(23-24-25)sts at beg of next 2 rows — 70(74-78-82)sts. Dec at ea end of next and foll alt rows 25(27-29-31) times in all . . . 20sts. Knit 14(14-16-16) rows. Cast off.

TO MAKE UP: Press lightly. Bring down extra cast off sts to side of bra and join seam. Catch bra cups together at centre front. Join crotch and side seams of pants.

STRAPS: Work 4 lengths of ch 35cm (13-3/4ins) long and attach to 4 points of bra. Work 1 row of dc over hat elastic around all edges of bra and pants.



PATTERN.

1. S/D on 1. Press button 1. Set lever. Move L.C. from L to R. Knit 2 rows.
Repeat having S/D on 2, 3, 4, 3, and 2.

BACK: T6.2. Cast on 120(126-132-138-144)sts in waste yarn. 58(61-64-67-70)sts to L of 0. 62(65-68-71-74)sts to R of 0. Knit 6 rows waste yarn. T5.2 knit 14 rows in Main Yarn. Press buttons 1, 3, 5 and 7, set lever. Move L.C. from L to R T6.2 Knit 15 rows. ** T7.2 close hem R/C 0. T5.2 work in patt until R/C reads 120. ** **SHAPE ARMHOLES:** R/C 0. Cast off 8(9-10-11-12)sts at beg of next 2 rows. Dec at ea end of next and foll alt rows 9(10-10-11-12) times in all. 86(88-92-94-96)sts. Work until R/C reads 84(88-88-92-92). **SHAPE SHOULDERS:** Cast off 9sts at beg of next 4 rows, then 9(9-10-10-10)sts at beg of foll 2 rows. Cast off rem sts.

RIGHT FRONT: Carr on L T6.2. Cast on 61(63-67-69-73)sts in waste yarn. 23(25-29-31-35)sts to L of 0. 38sts to R of 0. Knit 6 rows waste yarn. T5.2 knit 14 rows inc at L of Machine in every alt row. Press buttons 1, 3, 5 and 7, set lever. T6.2 knit 15 rows, dec at L of Machine in every alt row. Work as for Back from ** to **. **SHAPE ARMHOLE:** R/C 0. Cast off 8(9-10-11-12)sts at beg of next row. Dec at armhole edge in alt rows 9(10-10-11-12) times. 44 (44-47-47-49)sts. **SHAPE NECK:** Cast off 8(8-9-9-10)sts at beg of next row. Dec at neck edge in next and foll alt rows 4(4-5-5-8) times in all, then in foll 4th rows 5(5-5-5-3) times. 27(27-28-28-28)sts. Work until R/C reads 84(88-88-92-92).

SHAPE SHOULDER: Cast off 9sts at beg of next row and foll alt row. Work 1 row. Cast off rem sts.

LEFT FRONT: Carr on R. T6.2 Cast on 61(63-67-69-73)sts in waste yarn. 42sts to L of 0. 19(21-25-27-31)sts to R of 0. Complete to correspond with R. Front reversing all shapings.

SLEEVES: Cast on 89(91-95-97-99)sts in waste yarn. T6.2. Knit 6 rows. T5.2. Knit 14 rows in Main yarn. Press buttons 1, 3, 5 and 7, set lever. Move L.C. from L to R. T6.2 knit 15 rows. T7.2 Close hem. R/C 0. T6.2 knit until R/C reads 12. **SHAPE TOP:** R/C 0.

Cast off 4(4-5-5-6)sts at beg of next 2 rows. Dec at ea end of next and foll 4th rows 3(4-3-4-4) times in all – 75(75-79-79-79)sts, then in foll alt rows 27(27-29-29-29) times. Work 1 row. R/C reads 66(70-70-74-74). Cast off rem 21sts.

NECKBAND: Join shoulder seams. Wrong side facing pick up 131(135-139-141-145)sts evenly around neck. T6.2 knit 14 rows, inc at ea end of every alt row. Press buttons 1, 3, 5 and 7. Move L.C. from L to R. Knit 1 row. T5.2 knit 14 rows dec at each end of next and foll alt rows. Cast off.

RIGHT FRONT BAND: Wrong side facing pick up 134sts evenly along Right Front. T6.2, knit 6 rows inc at each end of alt rows 3 times. Counting from neck edge make 7 buttonholes by transferring 3rd st and every foll 16th st to adj needles 6 times. Leave empty needles in B pos. Knit 8 rows inc at each end of every alt row. Press buttons 1, 3, 5 and 7, set lever. Move L.C. from L to R. Knit 1 row. T5.2 knit 8 rows dec at each end of alt rows. Work buttonholes as before. Knit 6 rows dec at each end of alt rows. Cast off.

LEFT FRONT BAND: Work as for Right Front Band omitting buttonholes.

TO MAKE UP: Press lightly. Join side and sleeve seams. Sew in sleeves. Fold neckband and front bands in half on to wrong side and sew in position. Join mitred corners. Oversew around buttonholes. Sew on buttons. Press seams.

SKIRT (4 pieces). R/C 0. Cast on 66(68-66-66)sts for selvedge edge. T6.2 knit 1 row. Cast on 10(10-11-11-12)sts at beg of next 6 rows. 126(128-132-134-138) sts. Knit 5 rows. Dec at ea end of next and foll 4th rows 19 times in all – 88(99-94-96-100)sts, then in foll 8th rows 17 times – 54(56-60-62-66)sts. Knit 15 rows. R/C reads 234. T5.2 Knit 8 rows. Cast off.

TO MAKE UP: Press lightly. Join seams. Turn under 8 rows for waistband and stitch in pos. Thread elastic through wastband. Work 2 rows dc around lower edge of skirt. Press seams.

Pattern AU 32-8

Pattern AU 32-9





Pattern AU 32-10

BOY'S STRIPED JUMPER

Pattern AU 32-8



MATERIALS: 2(3-3-4-5) 50g balls of PATON'S Gem in Main Colour (MC), 1(1-1-2-2) 50g balls in Contrast Colour. 10cm (4ins.) Zip.

MEASUREMENTS: Fits chest 65(70-75-80-85)cm, 25½[27½-29½-31½-33½] ins. Measures 61(66-71-76-81)cm, 24[26-28-30-32] ins. Length 39(43-47-52-57)cm, 15¼[17-18½-20½-22½] ins. Sleeve Seam 6(8-8-10-10)cm, 2 3/8[3¼-3¼-4-4] ins.

TENSION: T6.2 = 30sts and 38 rows to 10cm (approx 4ins.) over stocking stitch. (Please check).

PATTERN.

1. Using MC Knit 6 rows st st.
 2. Using CC Knit 6 rows st st.
 3. As 1.
 4. Using CC Knit 4 rows st st.
 5. Using MC Knit 4 rows st st.
 6. Using CC Knit 2 rows st st.
 7. As 5.
 8. As 6.
 9. As 5.
 10. As 6.
 11. As 5.
 12. As 4.
- Repeat.

BACK: T.O. Using MC, cast on 90 (98-106-114-122) sts for 2 x 2 rib. T3 rib 24 rows. Transfer sts to Main Bed. T6.2 R/C 0, work in patt until R/C reads 76(84-90-98-104). **SHAPE ARMHOLES:** R/C 0, keeping patt correct, cast off 4(4-5-6-6)sts at beg of next 2 rows. Dec at each end of next and foll alt rows 4(5-5-5-6) times in all. 74(80-86-92-98)sts. **Work in patt until R/C reads 54 (62-70-76-82). **SHAPE SHOULDERS:** Cast off 8(8-9-10-10)sts at beg of next 4 rows, then 7(9-9-9-11)sts at beg of foll 2 rows. Take rem 28(30-32-34-36)sts off on waste yarn.

FRONT: Work as for Back to **. Work in patt until R/C reads 24(30-38-42-46). **SHAPE NECK:** Knit 44(47-51-54-58)sts at opp end to carr off manually on to waste yarn and push needles into "A" pos. On rem sts knit 2 rows. Dec at neck edge in next and foll alt rows 4(5-4-5-4) times in all 26(28-31-33-36)sts, then in foll 4th rows 3(3-4-4-5) times – 23(25-27-29-31)sts.

Work until R/C reads 54(62-70-76-82). **SHAPE SHOULDER:** Cast off 8(8-9-10-10)sts at beg of next row and foll alt row. Work 1 row. Cast off rem 7(9-9-9-11)sts.

Bring rem sts back into "B" pos. Knit 14(14-16-16-18)sts at centre front on to waste yarn and work other side to correspond.

SLEEVES:T.O. Using MC cast on 82(86-90-94-98)sts for 2 x 2 rib T3 rib 6 rows. Transfer sts to Main Bed. T6.2 Knit 4 rows. Inc. at each end of next and foll 6th rows 2(3-3-4-4) times in all. 86(92-96-102-106)sts. Cont. in st st until R/C reads 20(26-26-32-32). **SHAPE TOP:** R/C 0. Cast off 2(2-3-3-3)sts at beg of next 2 rows. Dec. at each end of next and foll alt rows 9(12-17-20-26) times in all – 64(64-56-56-48)sts, then in every row 21(21-17-17-13) times. Cast off rem 22sts.

NECKBAND: Join right shoulder sear. Wrong side facing pick up 98(102-106-110-114)sts evenly around neck (incl. sts from waste yarn). T6.2 Using MC, knit 1 row. Transfer sts for 2 x 2 rib. T3 rib 20 rows. Cast off loosely.

TO MAKE UP: Leaving left shoulder seam open for 10cm (approx 4ins.), join shoulder, side and sleeve seams. Sew in sleeves. Fold neckband in half on to wrong side and sew in position. Sew in zip. Press seams.

BOY'S PATTERNED SHIRT

Pattern AU 32-9



MATERIALS: 5(5-6-7-8) 25g balls of PATON'S Azalea "Patonised". 3 Small Buttons.

MEASUREMENTS: Fits chest 50(55-60-65-70)cm, 19½[21¼-23½-25½-27½] ins. Measures 52(57-62-67-72)cm, 20½[22½-24½-26¼-28¼] ins. Length 26(31-35-39-43)cm, 10¼[12¼-13¾-15¼-17] ins. Sleeve Seam 5(5-6-6-7)cm, 2[2-2 3/8-2 3/8-2¾] ins.

TENSION: T5 = 28sts and 80 rows to 10cm (approx. 4ins) over patt. (Please Check).

PATTERN.

1. S/D on 1. Cam on 2 (KH 6000-610-680) on III (KH 91) (HOLD) Press buttons 1, 3 and 5. Set lever. Knit 2 rows.
2. Cam on 3 (KH 600-610-680) on I (KH 91) (KNIT) knit 1 row Rep last 2 steps having S/D on 2, 3, 4, 5, 4, 3, and 2.
Repeat.

BACK: T.O. Cast on 73(79-87-93-101)sts for 1 x 1 rib. T2 rib 20 rows. Transfer sts to Main Bed. R/C 0. T5. Work in patt. until R/C reads 100 (132-152-168-184). **SHAPE RAGLAN:** R/C 0. Cast off 2(2-2-3-3)

sts at beg of next 2 rows. **Dec at ea end of next and foll 4th rows 15(17-20-22-31) times in all – 39(43-43-33)sts, then in alt rows 8(8-8-7-2) times. Work 1 row. R/C reads 76(84-96-112-128). Cast off rem 23 (25-27-29-29)sts.

FRONT: Work as for Back to **. **DIVIDE FOR FRONT OPENING.** Knit 38(41-45-47-51)sts at opp end to carr off manually on to waste yarn. Push needles into "A" pos. Dec at armhole edge in next and foll 4th rows 10(11-13-14-18) times in all – 21(23-25-26-26)sts. Work 2 rows. **SHAPE NECK:** Cast off 2sts at beg of next row. Cont dec at armhole edge in next and foll 4th rows 5(6-7-8-13) times in all, **AT THE SAME TIME** dec at neck edge in 6th row, then foll 4th rows 3(4-5-6-6) times – 10(10-10-9-4)sts. Dec at armhole edge only in foll alt rows 8(8-8-7-2) times – 2sts. Work 2 tog. Fasten off. Cast off 7sts at centre front and work other side to correspond.

SLEEVES: T.O. Cast on 57(57-59-63-67)sts for 1 x 1 rib. T2 rib 14 rows. Transfer sts to Main Bed. R/C 0 T5. Work in patt until R/C reads 20(20-28-28-36).

SHAPE TOP: R/C 0. Cast off 2(2-2-3-3)sts at beg of next 2 rows. Dec at ea end of next and foll 4th(4th-6th-6th-6th) rows 16(20-3-9-13) times in all – 21(13-49-39-35)sts, then in foll alt (alt-4th-4th-4th) rows. 6(2-20-15-13) times. Work 1 row. R/C reads 76(84-96-112-128). Cast off rem 9sts.

LEFT FRONT BAND: T.O. Cast on 9sts for 1 x 1 rib, inc at each end of Main Bed after selvedge (11sts). T2 R/C 0 rib 4 rows. Make a buttonhole by moving 5th and 6th sts to adj needles. Leave empty needles in "B" pos. Make a buttonhole in every foll 10th(10th-12th-12th-14th) row twice. Rib 4 rows. R/C reads 28(28-32-32-36). Cast off.

RIGHT FRONT BAND: Work as for Left Front Band omitting buttonholes.

COLLAR: T.O. Cast on 85(101-109-117-125)sts for 1 x 1 rib. T2 rib 32 rows. Cast off 6(7-8-9-9)sts at beg of next 10 rows. Cast off rem sts.

TO MAKE UP: Press lightly. Join raglan and side seams. Sew front band and collar in pos. Sew on buttons. Press seams.



Pattern AU 32-11

LADY/GIRL SKIRT AND TOP

Pattern AU 32-10



MATERIALS: TOP, 5(5-6-8-9-10) 25g balls of PATON'S Azalea in Main Colour (MC), 1(1-1-1-1-1) 25g balls in Contrast Colour (CC). SKIRT, 5(6-7-10-11-12) 25g balls in Main Colour (MC). 3.00 (No. 10-11) Crochet Hook. Length of 2cm (3/4 in) Elastic for waistband.

MEASUREMENTS: Top fits underarm/bust 60(65-70-85-90-95)cm, 23½[25½-27½-33½-35½-37½] ins. Measures 60(65-70-85-90-95)cm, 23½[25½-27½-33½-35½-37½] ins. Length 35(39-43-53-53-53)cm, 13¾[15¾-17-20¾-20¾-20¾] ins. Sleeve Seam 7(7-7-13-13-13)cm, 2¾[2¾-2¾-5 1/8-5 1/8-5 1/8] ins. Skirt fits waist 57(59-61-65-70-75)cm, 22½[23¼-24-25½-27½-29½] ins. Length 30(33-37-59-59-59)cm, 11¾[13-14½-23¼-23¼-23¼] ins.

TENSION: T5 = 31sts and 48 rows to 10cm (approx 4ins) over stocking st. (Please Check).

PATTERN.

1. Knit 10 rows MC.
2. Knit 1 row CC.
3. Press buttons 1, 3, 5, and 7. Set lever. Move LC from L to R. Knit 1 row CC.
Rep.

TOP.

BACK: T0. Using MC cast on 95(103-111-133-141-149)sts for 1 x 1 rib. T2 rib 22(22-22-28-28-28) rows.

Transfer sts to Main Bed. R/C 0. T5. Work in patt until R/C reads 92(100-108-140-140-140). SHAPE ARMHOLES: R/C 0. Cast off 4(4-5-8-9-10)sts at beg of next 2 rows. Dec at ea end of next and foll alt rows 4(5-6-9-10-11) times in all – 79(85-89-99-103-107)sts. ** Work until R/C reads 58(66-76-92-96-96). SHAPE SHOULDERS: Cast off 13(14-14-15-16-16) sts at beg of next 2 rows, then 13(14-15-16-16-17)sts at beg of foll 2 rows. Take rem 27(29-31-37-39-41) sts off on waste yarn.

FRONT: Work as for Back to **. Work 13(19-27-5-7-7) rows. SHAPE NECK: Knit 46(49-52-59-61-64) sts at opp end to carr off manually on to waste yarn and push needles into "A" pos. Knit 2 rows. Dec at neck edge in next and foll alt rows 7(8-8-4-6-6) times in all – 26(28-29-36-36-37)sts, D, E and F only – then in foll 4th rows (5-4-4) times – (31-32-33)sts. Work until R/C reads 58(66-76-92-96-96). SHAPE SHOULDER: Cast off 13(14-14-15-16-16)sts at beg of next row. Work 1 row. Cast off rem sts. Return rem sts to "B" pos. Take centre 13(13-15-19-19-21) sts off on waste yarn. Join yarn to rem sts and work other side to correspond.

SLEEVES: T4. Cast on 93(99-105-125-129-133)sts in waste yarn. Knit 6 rows waste. T4. Knit 8 rows MC. Knit 1 row CC. Press buttons 1, 3, 5 and 7, set lever. Move LC from L to R. T5 R/C 0 Knit 1 row CC. Knit 8 rows MC T6 close hem. T5 knit until R/C reads 15. Press buttons 1, 3, 5 and 7. Set lever. Move LC from L to R. Knit 1 row. Dec at ea end of next and foll alt (alt-alt-4th-4th-4th) rows 9(9-9-11-11-11) times in all – 75(81-87-103-107-111)sts. Knit 3 rows. SHAPE TOP: R/C 0. Cast off 2(2-3-4-5-5)sts at beg of next 2 rows. Dec at ea end of next and foll alt rows 16(17-23-32-33-29) times in all – 39(43-35-31-31-43)sts, then at ea end of every row 11(13-9-5-5-11) times. R/C reads 44(48-56-70-72-72). Cast off rem 17(17-17-21-21-21)sts.

NECKBAND: Join right shoulder seam. Wrong side facing pick up 95(97-101-151-153-157)sts (incl sts from waste yarn) evenly around neck. T5 Using MC knit 8 rows. Using CC knit 1 row. Press buttons 1, 3, 5 and 7. Set lever. Move LC from L to R. T4 Knit 1 row. Using MC Knit 8 rows. Cast off.

TO MAKE UP: Press lightly. Join left shoulder, side and sleeve seams. Sew in sleeves. Fold neckband in half on to wrong side and stitch in pos. Crochet a length of ch 49(52-56-66-68-70)cm, 19[20½-22-26-26¾-27¾] ins long. Thread through eyelet holes in sleeves and tie in a bow. Press seam.

SKIRT (Front and Back alike).

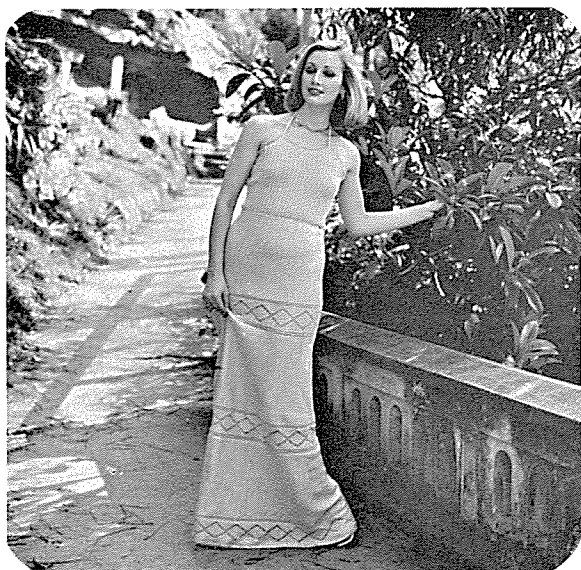
T5 R/C 0. Cast on 103(113-125-191-191-191)sts for selvedge edge. Knit 26(28-28-30-32-34) rows. Cam on 2(KH 600-610-680) on I (KH 91) *** Bring 18 needles at opp end to carr into "E" pos. Knit 1 row. Wind yarn around first inner "E" pos needle. Knit 1 row. * Bring next 15 needles at opp end to carr into "E" pos. Knit 1 row. Wind yarn around first "E" pos needle. Knit 1 row. * Rep from * to * 3(4-5-9-9-9) times **. Return 15 needles closest to carr to "C"

pos. Knit 1 row. Wind yarn around first "E" pos needle. Knit 1 row. ** Rep from ** to ** 3(4-5-9-9-9) times. Return last 18 needles to "C" pos ***. Knit 58(58-60-62-64-66) rows. **** Rep from first *** to ****, then from *** to ***. Knit 26(28-28-30-32-34) rows. Cast off.

TO MAKE UP: Press lightly. Join side seams. Turn under 9sts for waistband and stitch in pos. Thread elastic through waist. Work 2 rows of dc around lower edge of skirt. Press seams.

LADY'S HALTER NECK PATIO DRESS

Pattern AU 32-11



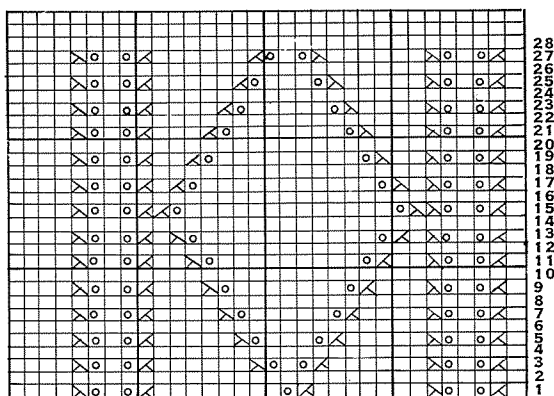
MATERIALS: PATON'S Crystal. 17(19-21-23)50g balls. Length of round elastic for waist.

MEASUREMENTS: Fits bust 80(85-90-95)cm, 31½ [33½-35½-37½] ins. Fits hip 85(90-95-100)cm, 33½ [35½-37½-39½] ins. Length (approx.) 129(129-129-129)cm, 50%[50%-50%-50%] ins.

TENSION: T8 = 27½sts and 37 rows to 10cm (approx 4ins) over st st. (Please Check).

SKIRT.

TOP PANEL: Carr on R. Cast on 100sts for selvedge edge. T8 Knit 2 rows. R/C 0. ** Carr on R working patt from graph over 28sts at R of machine patt 4 rows. Push 22sts at opp end to carr into E pos. * Cam on 2 (KH 600-610-680) on III (KH 91) Patt 1 row. Put yarn under 1st inner "E" pos needle to avoid making a hole. Knit 1 row. Cam on 3 (KH 600-610-



680) on I (KH 91) * Patt 8 rows. Push 44 needles at opp end to carr into "E" pos. Rep from * to * patt 8 rows. Push 66sts at opp end to carr into "E" pos. Rep from * to *.

Patt 2 rows. ** Rep from ** to ** 12(13-14-15) times. Patt 2 rows. R/C reads 366(394-422-450).

CENTRE PANEL: Work as for Top panel, but rep from ** to ** 16(17-18-19) times. (R/C will read 478(506-534-562) before cast off.)

LOWER PANEL: Work as for Top panel, but rep from ** to ** 21(22-23-24) times (R/C will read 618(646-674-702) before cast off.)

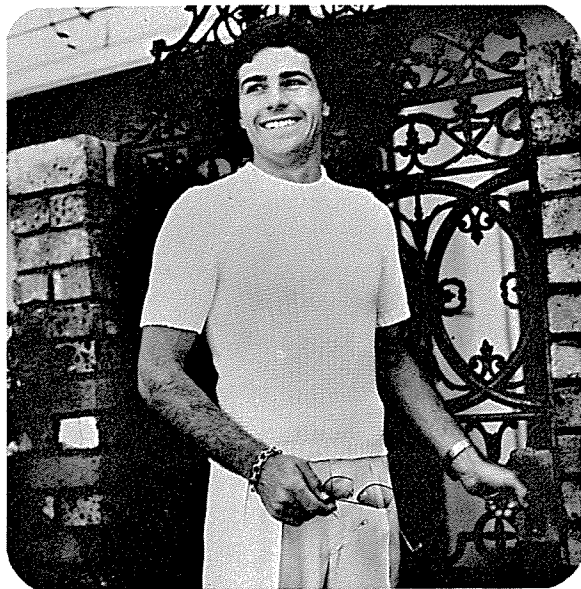
TOP (Front and Back alike).

T3 Cast on 114(122-126-134)sts for 2 x 2 rib. R/C 0. T7 on Main Bed T6 on ribber, rib 80 rows. T9 Main Bed T8 Ribber rib 1 row. Transfer sts to Main Bed and cast off with latchet tool.

STRAPS: Cast on 5sts for selvedge edge. T4 knit 2 lengths of Tubular Knitting (See P 45 Inst manual) (KH 600-610-180) approx 60cm (23½ins) long.

TO MAKE UP: Press lightly. Join skirt sections together. Join back seam of skirt and side seams of bodice. Join bodice to skirt. Thread elastic through waist and adjust to fit. Sew straps to front of bodice approx 12cm . . . 4 3/4 ins . . . from side seams. Press seams.

MAN'S COTTON JUMPER
Pattern AU 32-12



MATERIALS: 5(6-7-8-9) 50g balls of PATON'S Gem.

MEASUREMENTS: Fits chest 90(95-100-105-110) cm, 35½ [37½-39¼-41¼-43¼] ins. Measures 86(91-96-101-106)cm, 33¾ [35¾-37¾-39¾-41¾] ins. Length 57(57-59-59-60)cm, 22½ [22½-23¼-23¼-23¼] ins. Sleeve Seam 11cm [4¾ ins] all sizes.

TENSION: T6.2 = 30sts and 53 rows to 10cm (approx 4 ins) over pattern (Please Check).

PATTERN.

Leaving 3sts at centre front transfer every 4th st on to adj needles. Push empty needles into "A" pos. **NOTE — DO NOT TRANSFER END ST TO ADJ NEEDLE.**

1. Cam on 2(KH600-610-680) on III(KH 91) (HOLD). Press buttons 1 and 5. Set lever. Knit 2 rows.

2. Cam on 3(KH 600-610-680) on I(KH 91) (KNIT) Knit 2 rows.

Repeat.

NOTE. Needles in "A" pos are counted as stitches.

BACK: T.O. Cast on 122(126-134-142-146)sts for 2 x 2 rib 61(63-67-71-73)sts to L and R of 0. T3 rib 14 rows, dec at end of last row. Transfer sts to Main Bed. R/C 0 T6.2, work in patt until R/C reads 164. **SHAPE ARMHOLES:** R/C 0. Cast off 5(5-6-7-7)sts at beg of next 2 rows. Dec at ea end of next and foll alt rows 6(6-7-8-8) times in all. 99(103-107-111-115)sts. ** Work until R/C reads 116(116-122-122-128). **SHAPE SHOULDERS:** Cast off 11(11-11-12-12)sts at beg of next 4 rows, then 10(11-12-11-12)sts at beg of foll 2 rows. Take rem 35(37-39-41-43)sts off on waste yarn.

FRONT: Work as for Back to **. Work until R/C reads 68(68-70-70-72). **SHAPE NECK:** Knit 58(60-63-65-68)sts at opp end to carr off manually on to waste yarn and push needles into "A" pos. Knit 2 rows. Dec at neck edge in next and foll alt rows 5(5-4-4-4) times in all — 36(38-40-42-43)sts, then in foll 4th rows 4(5-6-7-7) times — 32(33-34-35-36)sts. Work until R/C reads 116(116-122-122-128). **SHAPE SHOULDER:** Cast off 11(11-11-12-12)sts at beg of next row and foll alt row. Work 1 row. Cast off rem 10(11-12-11-12)sts. Bring rem needles back into "B" pos. Knit centre 17(17-19-19-21)sts on to waste yarn. Join yarn to rem sts and work other side to correspond.

SLEEVES: T.O. Cast on 106(110-114-118-122)sts for 2 x 2 rib. T3 rib 10 rows, dec at end of last row. Transfer sts to Main Bed. R/C 0 T6.2, work in patt until R/C reads 36. **SHAPE TOP:** R/C 0. Cast off 3(3-3-4-4)sts at beg of next 2 rows. Dec at ea end of next and foll 4th rows 5(3-3-2-2) times in all — 89(97-101-105-109)sts, then in foll alt rows 34(38-40-42-44) times. Work 1 row. R/C reads 88(88-92-92-96). Cast off rem 21sts.

NECKBAND: Join right shoulder seam. Wrong side facing pick up 134(138-142-146-150)sts evenly around neck (incl sts from waste yarn). T6.2. Knit 1 row. Arrange sts for 2 x 2 rib T3 rib 30 rows. Cast off loosely.

TO MAKE UP: Press lightly. Join left shoulder seam. Join side and sleeve seams. Sew in sleeves. Fold neckband in half on to wrong side and sew in position. Press seams.

EMPISAL

*AN EMPISAL PUBLICATION: WORLD COPYRIGHT BY EMPISAL INTERNATIONAL

INTERNATIONAL
KNITWEAR
COLLECTION

EMPISAL

BOOK AU32

